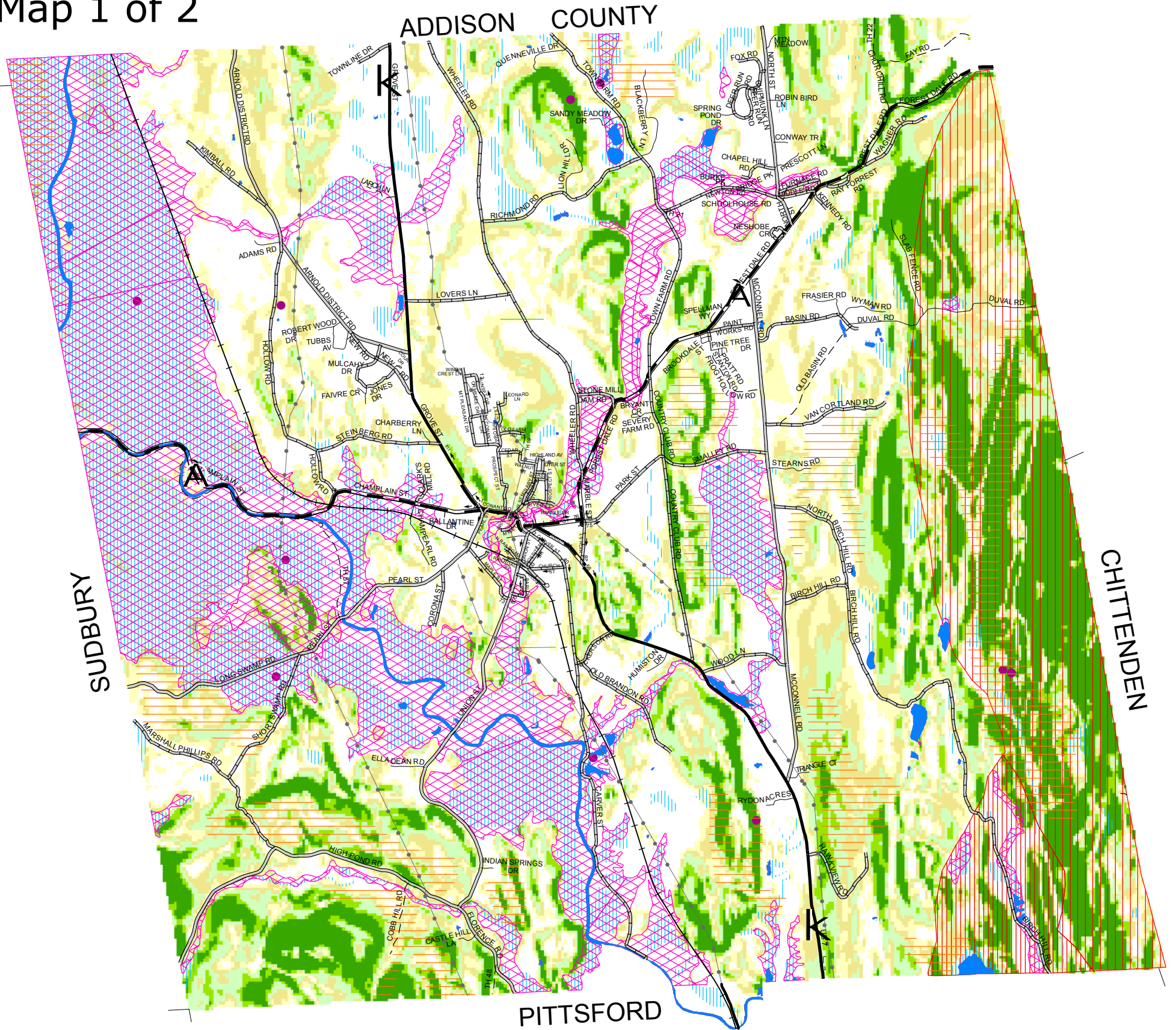


# Natural Resources

## Brandon

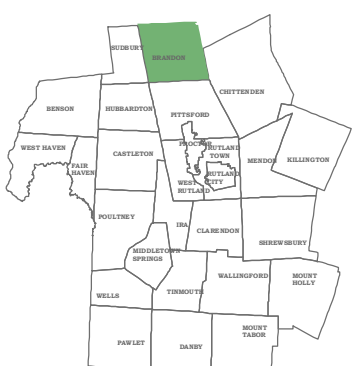
### Map 1 of 2



- |                   |                        |                         |
|-------------------|------------------------|-------------------------|
| US Highway        | Railroad               | Bear Production Habitat |
| State Highway     | Electric Line          | Seasonal Bear Habitat   |
| Class 2 Town Road | Rivers & Streams       | Slopes 6 - 10 %         |
| Class 3 Town Road | Lakes & Streams        | Slopes 10 - 14 %        |
| Class 4 Town Road | Deer Wintering Areas   | Slopes 14 - 20 %        |
| State Forest Road | Flood Hazard Areas     | Slopes 20 - 24 %        |
| Private Road      | Rare Plant/Animal Site | Slopes Above 24 %       |
| Other Road        | Wetland                |                         |



#### Location Map



Map intended for planning purposes only.  
For more information, please contact:  
Rutland Regional Planning Commission  
PO Box 965, The Opera House, Third Floor  
Rutland, VT. 05702

**POLITICAL BOUNDARIES:** 1:24,000 USGS Quadrangles, VCGI, 1991.

**ROADS:** VT Enhanced 911 project 1996 -1998.

**SURFACE WATER:** Interpreted from 1:5,000 orthophotos using USGS 7 1/2' quadrangles and 1:20,000 color infrared aerial photography as additional source material.

**NWI WETLANDS:** USFWS NWI used 1:80000 color infrared aerial photos (flown between 1975 and 1978), USGS topo sheets and other mapped and text data to interpret locations of wetlands. 3 acre mapping unit. Two-thirds of the wetlands were hand digitized from 1:24000 mylars. The remainder was scanned from 1:24000 or 1:25000 mylars. These mylars were created by transferring wetland polygon boundaries from 1:25000 NWI mylars to 1:24000 basemaps. Wetlands for planning purposes only. Refer to the VANR-DEC, Water Quality Division, Wetlands Section for official wetlands determinations. (802) 241-3770.

**FLOOD PLAIN:** Digitized from FEMA Flood Insurance Rate Maps. Floodplains for planning purposes only. Refer to the VANR\_DEC, Water Quality Division, Floodplain coordinator for official floodplain determinations. (802) 241-3759.

**DEER WINTERING AREAS:** 1:24000 AND 1:25000, VANR, 1994.

**BLACK BEAR HABITAT:** Vermont Fish and Wildlife Department, "Black Bear Habitat in Vermont, 1989"

**RARE PLANT/ANIMAL SITES:** Rare, Threatened and Endangered Species & Significant Communities, 1:24000, Vermont Nongame and Natural Heritage Program, VANR, 1997.

**SLOPE:** Generated from 7.5 minute DEMs. Slope was calculated for 30 by 30 meter pixel, 1998.

0.5 0.25 0 0.5 1 1.5 2 Miles

January 2008