

Brandon Town Plan

DRAFT – June 30, 2015

Prepared by

the Brandon Planning Commission

under the authority of

the Vermont Statutes Annotated

Title 24, Chapter 117

TABLE OF CONTENTS

TABLE OF CONTENTS.....	2
OVERVIEW.....	6
PLANNING AND PROPERTY RIGHTS	8
VISION	10
GOALS, POLICIES, ACTION STEPS	10
COMMUNITY PROFILE.....	12
Physical Characteristics and Location	12
Brief History of Brandon	12
Government	13
Socioeconomic Information.....	13
Population	13
Age and Social Characteristics	14
Households	14
Income and Employment.....	15
PUBLIC FACILITIES AND SERVICES.....	16
Introduction	16
Goals	16
Policies	16
Utilities Infrastructure.....	17
Water Supply.....	17
Sewer	18
Municipal Services	19
Town Offices	19
Fire Protection	19
Police Protection.....	20
Solid Waste Disposal	20
Community Facilities.....	22
Brandon Free Public Library.....	22
Brandon Area Rescue Squad (BARS)	22
Brandon Senior Citizens, Inc.	22
Brandon-Leicester-Salisbury-Goshen Insect Control District	23
Educational Facilities Plan.....	23
ENERGY	27
Introduction	27
Goals	27

Policies	27
Action Steps	28
Analysis	28
Statewide Trends and Data.....	28
Energy resources.....	29
Needs	30
HOUSING	33
Introduction	33
Goals	33
Policies	33
Existing Conditions.....	34
Housing Market.....	35
Affordable Housing	35
Rental Housing	36
Recommendations	36
CHILDCARE	38
Introduction	38
Background / Analysis	38
Goal	38
Policies	39
Action steps.....	39
RECREATION.....	40
Introduction	40
Goal	40
Policies	40
Recreation Background.....	40
Brandon’s Recreation Program.....	41
Recreation Infrastructure	41
HISTORIC AND CULTURAL RESOURCES.....	43
Introduction	43
Goals	44
Policies	44
Background	45
Action steps.....	47
ECONOMIC DEVELOPMENT	49
Introduction	49
Goal	49
Policies	49

Background	51
Economic Characteristics	51
Businesses	51
Workforce	51
Economic Development Activities	52
Action steps.....	53
NATURAL RESOURCES.....	55
Introduction	55
Goal	55
Policies	55
Background	55
Physiography.....	55
Geology and Soils	56
Water Resources	57
Aquifer and Wellhead Protection	57
Hydrology/Watersheds	57
Surface Waters.....	58
Wetlands	59
Water Quality.....	59
Wildlife and Vegetation	59
Agricultural and Forest Land	60
Scenic and Aesthetic Resources.....	61
Conservation Areas	61
Action steps.....	62
FLOOD RESILIENCE	65
Background	65
Floodplains	65
Response	65
Goal	66
Policies	66
Action steps.....	66
TRANSPORTATION	67
Introduction	67
Goal	67
Policies	67
Background	67
Highways and Roads	68
Highway Traffic Volumes	68

Infrastructure Conditions.....	68
High Accident Locations (HAL)	69
Pittsford-Brandon US 7 Upgrade (Project ID - NH 019-3(49))	69
FUTURE LAND USE	74
CONCLUSION AND IMPLEMENTATION	80
INDEX	81



*"The surface of the town is generally level. The Green Mountains lie along the east line, presenting some lofty summits while to the west is the smaller Taconic Range, which ends apparently in the Sudbury area. The principal streams are Otter Creek, which runs through the town from south to north, and the Mill or Neshobe River, which rises among the mountains in Goshen and enters the town from the east. At the foot of the mountains, the Mill or Neshobe River receives the waters of a small pond, called Spring Pond and becomes a considerable mill stream." So wrote Mrs. Augusta Kellogg in 1899 and it is much the same today."*¹

OVERVIEW

The Brandon Town Plan is the primary, if not definitive, statement of how the Town's values, especially regarding how future growth and development should proceed in order to promote the health, safety and welfare of its citizens. In general, the goals, policies and action steps² found in the Plan are meant to preserve and protect the town's assets while providing for improvements and growth that support the community. The findings and action steps contained in this Plan influence the Town's budget and capital expenditures, community development, historic preservation, economic development, and wise use of resources. The

¹ Brandon, Vermont: A History of the Town 1761-1961; published by the Town of Brandon, 1961.

² The statute governing municipal plans discusses "recommendations" and "recommended" programs and policies. 24 V.S.A. § 4382. We have chosen the term "action steps" to reinforce the idea that the recommendations in this plan are intended to be acted upon and the goals achieved.

Plan is the basis for Brandon's zoning and other ordinances relating to development, the local economy, and our quality of life. The long-range goals and vision in this Plan seek to address the town's needs during the next 20 years, while the Plan is to be readopted at least every five years to reflect changing circumstances and the achievement of shorter-term goals.

Use of the Plan

The Plan is intended to be the foundation for community programs, policy setting, and decision-making. The findings and recommendations will influence the Town's budget and capital expenditures, community development efforts, and natural resource protection initiatives. The Plan is the basis for the local land use controls such as those in the Brandon Land Use Ordinance. The Plan is intended to be read and used in its entirety. Interested people are encouraged to study the whole plan rather than just the Overview and readers should consider individual policies and recommendations in the context of the whole Plan rather than as stand-alone concepts. Because the Plan is not able to fully address every important local issue, it should also be used as a source of topics for further study. The Plan is to be given full effect in all appropriate regulatory proceedings such as Act 250.

The Technical Appendices A-G attached to the Town Plan constitute the best and most recent available data as of the date of adoption. It is expected that, almost immediately after the adoption of this Plan and continuing thereafter over the life of the Plan, the referenced data sources will make available updated statistical and technical information of relevance. As such data becomes available, it may be used to supplement the current data by those seeking to implement the terms and provisions of the Town Plan.

Statutory Authority

The Vermont Municipal and Regional Planning and Development Act (Chapter 117 of Title 24, Vermont Statutes Annotated) guides the preparation of town plans in the state. The Act specifies how a Plan should be developed and what it should contain. This Plan was prepared , adopted, and approved in conformance with the statutory requirements of the Vermont Municipal and Regional Planning and Development Act (Chapter 117 of Title 24, Vermont Statutes Annotated). It is also , is consistent with the Rutland Regional Plan, as readopted in 2008, and is compatible with the approved plans of surrounding communities of Sudbury, Chittenden, Pittsford, Hubbardton, Goshen, and Leicester. Under the authority of the Select Board, the Brandon Planning Commission, in concert with other interested parties, prepared the Town Plan and submitted it for final approval by the Select Board. The Planning Commission provided a copy to the Rutland Regional Planning Commission and all surrounding towns.

Comment [A1]: New year?

Preparation of the Plan

The Brandon Town Plan was last rewritten and adopted in 2005. This version was re-adopted on December 17, 2007 in anticipation of a full update in 2008. An interim version was then adopted May 19, 2014, with the intention of serving as a launching point for comprehensive review, revision, and update.

The current update has been drafted by members of the Planning Commission with input from residents, town government, and Brandon community organizations. Public facilitation and technical assistance, made possible by a Municipal Planning Grant and a Community Canopy Grant, has been provided by Robert Black, _____, and the Rutland Regional Planning Commission. Special thanks are due to Kevin Thornton for his review of the Historic & Cultural Resources section.

Information on the Plan development and drafts of the Plan has been made widely available both in hard copy and via the Town's website. Two widely advertised public hearings were held in addition to displays and presentations by Planning Commissioners at Town Meeting and at the Town Library. A survey was conducted by the Planning Commission while updating the Plan to gauge the public's opinion on key issues. The public has been encouraged to participate at every meeting, and more public input was solicited during the approval process.

Comment [A2]: Needs reworking post-barnraising

Development of this Plan has been another step in an ongoing series of efforts that demonstrate the dedication, care and esteem in which Brandon's residents hold their town. Citizens have repeatedly shown a remarkable willingness to volunteer their time, energy and money to make theirs a better community. Dedication is evident in recent efforts to preserve the Brandon Town Hall and the Stephen A Douglas Birthplace. All of this work toward a common goal of community building and adaptive reuse of old buildings for business and social purposes are examples of local investment in the town as we know it today and to our vision for its future.

PLANNING AND PROPERTY RIGHTS

The purpose of this Plan is to maximize the quiet enjoyment and productive use of private property while maintaining the highest standards of health and safety and promoting the general welfare through the coherent, shared, and comprehensive community vision expressed in its pages.

"Ownership is the set of rights and duties allowing one to use, manage, alter, or convey property."³ Property ownership is often described "a 'bundle of sticks'—a collection of individual rights which. . . . State law determines only which sticks are in a person's bundle."⁴ Generally, the "sticks" – the primary property rights – are use, management, quiet enjoyment, and the ability to sell or lease the land.⁵

The state can limit or even eliminate one or more sticks in the bundle through legislation intended to protect the health, safety, morals, and general welfare of its citizens, so long as it

³ *State v. Gillard*, 88 A.3d 389, 2013 VT 108 (Vt. 2013).

⁴ *United States v. Craft*, 535 U.S. 274, 122 S.Ct. 1414, 152 L.Ed.2d 437 (2002) (citations omitted).

⁵ See Black's Legal Dictionary, 9th ed., 1215 (defining "ownership").

does not entirely deprive the owner of beneficial use of the property.⁶ Aesthetics is also recognized as a legitimate public interest. “Aesthetic and environmental wellbeing, like economic wellbeing, are important ingredients of the quality of life in our society, and the fact that particular environmental interests are shared by the many, rather than the few, does not make them less deserving of legal protection through the judicial process.”⁷ This is important because aesthetics has been found to be one of the main things that attracts and binds people to a community.⁸

Through Chapter 117 of the Vermont Statutes Annotated, municipalities are given the power to create a Town Plan and regulate land use. The reason for this may be found in the Vermont Constitution: “That every member of society hath a right to be protected in the enjoyment of life, liberty, and property, and therefore is bound to contribute the member's proportion towards the expence of that protection, ... nor are the people bound by any law but such as they have in like manner assented to, for their common good.” Thus, it may be said, our rights are secure only in proportion to our willingness to participate financially and politically.

Implementation of this Plan will necessarily involve a balancing of public and private interests, and all members of the Brandon community are encouraged to participate in ongoing, constructive dialogue to achieve the common good.

⁶ *Alger v. Department of Labor & Industry*, 917 A.2d 508, 2006 VT 115 (Vt. 2006).

⁷ *Sierra Club v. Morton*, 405 U.S. 727, 92 S.Ct. 1361, 31 L.Ed.2d 636 (1972).

⁸ (What Attaches People to Their Communities?)

VISION

Brandon is a real Vermont town, from Downtown to Forest Dale, Brandon and its residents have a strong sense of place and are proud of our significant community and historic assets. Brandon's downtown and Forest Dale village provide the essential goods and services that have moved to the outskirts of many other Vermont towns. Our town also provides the locals and residents of surrounding towns with jobs, retail goods and services, and the social and civic benefits of an active and diverse community. This vision will be achieved through the goals, objectives, and recommendations contained within each section of the Plan.

GOALS, POLICIES, ACTION STEPS

24 V.S.A. § 4382 (1): A statement of objectives⁹, policies, and programs¹⁰ of the municipality to guide the future growth and development of land, public services, and facilities, and to protect the environment;

Below are the **goals, policies, and action steps** outlined within each section of the Plan.

Comment [A3]: These are visions. Should we change them to real goals, or should we articulate them as visions?

Public Facilities and Services

GOAL:

Maintain and/or expand public facilities and services infrastructure to satisfy the current demand and accommodate additional growth consistent with this Town Plan.

Energy

GOAL:

Encourage energy efficiency and recycling, as well as renewable and alternate power sources and fuel sources within the Town of Brandon and in cooperation with other organizations.

Housing

GOAL:

Promote compatible, safe and affordable housing, of a variety of types, for all residents of the community.

Child Care

GOAL:

Encourage a variety of quality child care options.

⁹ This Plan uses the term "goal," but the intended meaning is the same.

¹⁰ The Planning Commission believes the term "action steps" appropriately addresses the "program" component. Action steps within this plan are formulated to be "SMART": Specific, Measurable, Assignable, Reasonable, and Time-bound

Recreation**GOAL:**

Create a physical and social environment in which recreation is a key aspect of healthy community life and daily activity for all of Brandon's residents.

Historic and Cultural Resources**GOAL:**

Protect and maintain the town's historic settlement patterns, protect historic locations, safeguard archeological sites, and encourage the preservation of architectural assets, which are all non-renewable resources.

Resources**GOAL:**

Contribute to the quality of life in Brandon by promoting a variety of cultural resource opportunities.

Economic Development**GOAL:**

Create an economic climate that retains and attracts businesses which contribute to our quality of life.

Natural Resources**GOAL:**

Provide for the long-term protection of and promote conservation of our natural resources

Transportation**GOAL:**

Support an accessible, cost-effective, balanced transportation system that meets the needs of Brandon residents and businesses while providing through movement of people and goods.

Future Land Use**GOAL:**

Encourage strategic growth and economic development while protecting existing cultural, historic and natural resources.

COMMUNITY PROFILE

Physical Characteristics and Location

The Town of Brandon encompasses 25,152 acres, or 41 square miles, and is bisected by US Route 7. Included within the Town are the villages of Brandon and Forest Dale. Brandon is located at the north central border of Rutland County. Rutland City, our county seat, sits to the south, and Middlebury, shire town of Addison County, sits to the north. Our Town is thus a gateway between the two counties and is considered a “subregional center” by the Regional Planning Commissions in Rutland and Addison Counties.

Brief History of Brandon

When the first settlers came to the area in the mid-1770s, they established the village of Neshobe. The area was rich in natural resources with excellent farmland along the rivers and abundant supplies of timber and minerals. The Town grew and flourished during the 1800s with several industries relying on the key resources of waterpower, iron ore and marble. The coming of the railroad in 1849 enabled the manufacture and shipping of iron-based products such as the Howe scale, as well as Brandon paints, wood products and marble.

During its century of rapid growth, Brandon Village evolved a unique village plan. The historic Crown Point military road came through Brandon to connect Lake Champlain to the east coast. The Congregational and Baptist churches were built on either side of the Neshobe River, each with its own green laid out at a bend in the road. In the ensuing decades, government, commerce and prominent individuals developed commercial streets at the core which radiated out from the greens lined with residences leading to farms, mines and quarries in the Town. Pearl and Park Streets were laid out to be suitable for militia training, resulting in broad, tree-shaded streets with deep front yards.

Comment [A4]: This has nothing to do with the village plan.

Comment [A5]: This is apparently a statement without support

As the early industries began to decline, dairying, stockbreeding and tourism became increasingly important and ensured the vitality of Brandon in the 20th century. The establishment of the Brandon Training School in 1915 was a significant event, providing many employment opportunities for area residents. At its height, the Training School served over 600 Vermont residents. Changes in policy and social service practices lead to closing the facility in November 1993. The campus, now called Park Village, is used for a variety of purposes including residential, industrial, and institutional uses.

Today Brandon is a thriving, diverse community offering a full range of services for its citizens. Several industries, a variety of shops and services provide many opportunities for town residents and surrounding communities.

Government

Brandon has the "Town Meeting" form of government. In 1947, Brandon adopted the Select Board/Town Manager form of government which delegated general supervision of the affairs of the Town to an employed Town Manager. The Select Board remains the governing body of the Town. Three of the five Select Board members are elected for three year staggered terms, while two are elected annually. Other governing bodies include Brandon Fire Districts #1 and #2 and Brandon Town School District. Brandon elects members to the Otter Valley Union High School Board of Directors.

Comment [A6]: Inconsistent?

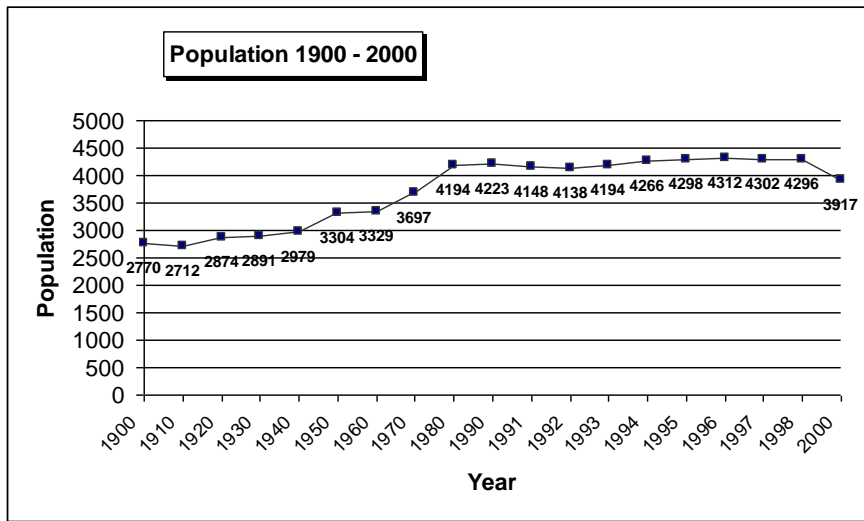
Socioeconomic Information

An analysis of a community's population, housing, and economic activity is an important feature of a municipal plan. This socioeconomic information allows the Town to estimate future population growth or decline, anticipate impacts on community services and land use, and respond to the changing needs and demands of citizens. The following information is a highlight of recent trends in the Town of Brandon, with more detailed information in the Technical Appendices. Most of the data is based upon the 2000 Census.

Population

According to the 2000 Census, Brandon has the fourth highest population of the 27 communities in Rutland County. The chart below shows the population changes over the past century in the Town of Brandon. The Town experienced a long period of population increases throughout the 20th century with a high in 1998. In the last decade, the trend reversed and the population decreased. Some of this loss could be attributed to the closing of the Brandon Training School.

Town of Brandon Population



Age and Social Characteristics

Generally, Brandon's population is becoming older. For example, median¹¹ age rose from 33.7 in 1990 to 44.7 in 2010, largely as a result of increases in the middle age segments of the population. Brandon's population by age is in most cases similar to the county. The school-age demographic makes up a slightly larger percentage of the total population within Brandon than exists at the county level. (For more detail: Technical Appendix A, Figure 6).

The aging of the population is a development with potentially significant planning implications. For example it suggests that the town should anticipate increased and changing demands for community and health-oriented services. It also suggests the need to attract workers to replace people who retire from the workforce.

Households

The distribution of Brandon's population within the community is also becoming more dispersed. The average household in the community, which shrunk somewhat between 1990 and 2000, has remained fairly steady and 2-3 (average: 2.36) persons per household. Consequently, the overall number of households has also remained rather steady, increasing by just 1 percent from 2000 to 2010 (see Figures 7, 8, 9 and 10 in Technical Appendix A).

Comment [A7]: NB – need figures for new additions

¹¹ The median age is the "middle" age of a population. One half of the population is older than the median age, while the other half of the population is younger than the median age.

Brandon has a higher percentage of families relative to total households (63.8%) than the county (61.6%) and the state (62.5%), even with a percent decrease between 1990 and 2000. In addition, Brandon's number of single-parent families with children under the age of 18, as a percentage of all families has risen to 33 percent in 2010, up from 27.2 percent in 2000 and 26.3 percent in 1990. Single-female families dominate this category, representing over 70 percent of the single-parent families in Brandon.

Income and Employment

Median household and family incomes have risen over the period from 1989 to 1999 and continue to rise. Brandon incomes are lower than those for Rutland County and the state. An increasing number of women are employed as a percentage of the total employment population over age 16. In 1980, 44.3% of the total workforce was women. In 2000, 50.5% of the total workforce was women, and that percentage has remained around 50 percent ever since.

According to the American Community Survey 5-year estimates, the 2010 general poverty rate in Brandon was 11.2 percent, a decrease from 17.9% in 1990. Also, the percentage of families in poverty decreased from 12.7% in 1990 to 6.8% in 2000. Although it had increased to 8.8 percent by 2010, the margin of error of almost 5 percent diminishes the utility of these figures. The level of education for persons over the age of 25 has greatly increased (see Technical Appendix D, figure 15). These poverty and education numbers indicate a significant shift in the overall economic well-being of the community.

The unemployment rate in 2010 was 9.6 percent of the labor force and declining¹², (see Technical Appendix C, Figure 17). In 2000, Brandon residents were primarily employed in the manufacturing, retail trade, and education sectors. By 2010, following a national pattern, residents were primarily employed in the education, sales, and administration sectors. The largest increases from 2000 to 2014 were building-construction, leisure and hospitality, and financial activities.

Comment [A8]: How many in working lands jobs?

¹² <http://www.homefacts.com/unemployment/Vermont/Rutland-County/Brandon.html>

PUBLIC FACILITIES AND SERVICES

Comment [A9]: Let's have some photos in this section, as well as mock-ups of new Green Park, Central Park, and other proposed stuff.

24 V.S.A. § 4382 (4) A utility and facility plan, consisting of a map and statement of present and prospective community facilities and public utilities showing existing and proposed educational, recreational and other public sites, buildings and facilities, including hospitals, libraries, power generating plants and transmission lines, water supply, sewage disposal, refuse disposal, storm drainage, and other similar facilities and activities, and recommendations to meet future needs for community facilities and services, with indications of priority of need, costs and method of financing.

Comment [A10]: Let's have the map be here

Introduction

This section contains information on services provided directly by the Town, by other government agencies, and by nongovernmental organizations. The services are provided for by general budget allocation or by specific vote at Town Meeting.

Goals

- Attract and keep people, businesses, and organizations in Brandon by providing high-quality municipal infrastructure and services.
- Attract and keep people, businesses, and organizations in Brandon by supporting nonmunicipal service providers.

Policies

- The Town of Brandon will maintain public facilities and services infrastructure to satisfy the current demand and accommodate additional growth consistent with this Town Plan.
- The Town of Brandon shall develop an integrated and efficient infrastructure system to provide the services required by residential, commercial and industrial members of the community while minimizing adverse fiscal impact.
- When constructing, expanding, or providing public or private community facilities and services, ensure consistency with the goals and policies of this Plan including whether or not it would contribute to the desired land use pattern of a central, compact town center and clustered development.
- Results of GW mapping study (ES to provide)

Comment [A11]: ???????????

Utilities Infrastructure

Water Supply

Domestic water is supplied in the villages of Forest Dale and Brandon by Fire District #1. In 2002, Brandon Fire District # 2 was created through acquisition of the community public water supply system from the Forrestbrook Water Corporation. This loop system serves over 50 residences in the Forrestbrook housing development north of Forest Dale in the Aquifer land use district. The Fire District #2 Prudential Committee serves as the operator of this facility.

Sources	Estimated Capacity
Primary Source: Well #2 -	630 gallons per minute
Secondary Source: Well #1	450 gallons per minute
Source Well #3	700 gallons per minute
Storage	
Glass-lined storage tank. Installed in 1989.	928,000 gallons
Earth-covered, concrete reservoir.	500,000 gallons
Water tower	750,000 gallons
Distribution	
Loop System with a 14" main from the storage tanks through an 8" main interconnected at three points to provide higher fire flows.	

Well #3 became operational in 2002 and supplies up to 700 gallons per minute. The town owns the land and can control development in close proximity to the wells at this location. Well #1 is an 'unconfined aquifer' meaning there is no layer of clay between the bottom of the well and

possible sources of pollution on the surface. To insure the quality of the water, the Town owns land surrounding this well head.

The Town of Brandon has water supplies well in excess of current demand. The average daily demand is about 450,000 gallons per day (GPD). The combined storage facilities, excluding the water tower, hold a three-day supply of water.

The system is metered with usage billed semi-annually. Connection fees are placed in a capital project fund for major improvements and repairs, while user fees are charged to fund operating expenses. Major expansions to the service area are not currently planned, but extensions to serve pockets of land or development near existing lines are considered. Connections within the District are routinely made upon payment of a connection charge based on projected usage.

The public aquifers from which the well water is drawn have been identified and mapped. Land use regulations are in effect to protect the water sources.¹³ Because the community water system is heavily dependent upon ground water, it is essential that development near the aquifers be strictly controlled to protect the quality of the water. Water outside District boundaries is supplied by individual wells. Areas with a large concentration of wells should be considered for future aquifer protection.

EPA and the VT Geological Survey have done some assessment work in 2008 to identify additional areas for water supply. There are good sand and gravel layers on McConnell Road that are indicative of an aquifer. They have done some seismic studies to see if they could identify gravels and the top of bedrock. So far, the assessment work looks promising for the potential to develop more water supply capacity. There is some follow up work planned.

Sewer

The Town of Brandon owns and operates a secondary treatment sewage plant for the treatment of household waste within the collection system. Treated effluent is discharged into the Neshobe River and flows adjacent to the site. Sludge from the treatment beds is trucked to Rutland City. The sewer plant serves areas of Brandon and Forest Dale.

The plant has a design capacity and permitted flow of 700,000 gallons per day. The normal dry weather flow is about 300,000 gallons per day.¹⁴

The sewer system is user-fee based. Connections are made within the service area upon payment of the connection fee. Several improvements have been made to the sewer system including dechlorination of the effluent, repair of the Forest Dale pump station, installation of

¹³ Section 600.16 of the Brandon Land Use Ordinance Hazardous Materials.

¹⁴ See http://www.town.brandon.vt.us/public_works.htm for more information.

electrical code explosion-proof circuitry, and separation of the storm water drainage from the sanitary system. The current type of treatment process is oxidation ditch and extended aeration with phosphorous removal. The sewer system has been extended to a pump station in the Industrial Park to Carver Street and the Neshobe House. Removing roof drains, sump pumps, and building drains as well as repairing aging lines and infrastructure remain the department's priority

Municipal Services

Brandon is governed by an elected Select Board. Day-to-day administration is provided by a Town Manager employed by the Board. The Town Manager administers the budget, supervises various town departments, serves as the spokesperson for the town, and represents the town. The Manager also coordinates other functions of government that are not under the Manager's direct supervision, such as tax assessment and records.

Town Offices

As of 2005, Town government was located in what the Plan termed "inadequate quarters" at the corner of Center and West Seminary Streets. At that time, the Select Board was considering several options for relocating the town offices. Tropical Storm Irene destroyed those offices in 2011, resulting in relocation of town functions first to the firehouse, then to a rented location on Route 7 south of downtown. Through a FEMA grant and the pro bono efforts of several townspeople, the town offices are expected to return to the downtown location within five years.

Comment [A12]: ?????????

Fire Protection

Fire protection in Brandon is provided by the Brandon Fire Department which is an all-volunteer organization consisting of 30 active members. A new firehouse was constructed in 1998 on Franklin Street, substantially increasing the available space and combining offices, training quarters, vehicle storage facilities and garaging under one roof. The organization is supported by funds from a town-wide tax and is governed by the Prudential Committee for Fire District #1 with three elected members.

Considering its size, the Brandon Fire Department serves a broad area. In addition to serving the Town of Brandon, there are mutual aid agreements with towns in both Addison and Rutland Counties.

A system of fire hydrants is maintained within Fire District #1 which provides a high degree of firefighting effectiveness. Radial distance to be traveled from the fire station during an

emergency is approximately three miles. The department is capable of reaching the outermost point in Brandon within four to six minutes. The District responded to 156 calls in 2013, which totaled 2,902 personnel hours.

Although the Fire District currently operates independently, it is in the public interest that the organization remains knowledgeable and aware of future growth trends and development patterns in Brandon. Location, access to, and density of a new development should include provision for effective fire protection. Cooperation between the Fire District, the Town and the Planning Commission in the mutual assessment of growth in relation to equipment and manpower needs will continue to ensure superior quality fire protection service in Brandon.

Police Protection

The authorized strength of the Brandon Police Department is seven full-time officers. The department routinely assists the Vermont State Police from the Rutland and New Haven barracks. On occasion, VSP assists the Brandon Police Department.

Since the last iteration of this Plan, the Police Station has relocated from the second floor of the Town Offices on Center Street to Forest Dale Road.

Communication and dispatching is currently handled through State Police dispatch in Rutland; though, that status is threatened by a budget crisis that resulted in the Governor's proposal to close the so-called "PSAP" center. Calls for local and State Police assistance are received and transmitted from this station by either radio or phone. At present, police coverage appears to be adequate, generally with prompt response to calls.

Solid Waste Disposal

The Transfer Station is operated by a contractor. They staff the transfer station and are responsible for directing the disposition of solid waste materials, as well as assisting individual citizens and private waste haulers who deposit solid waste and recyclables during the transfer station operating hours. The contractor also coordinates the disposition of other recyclable materials including batteries, waste oil, scrap metal, tires, and yard wastes. The town presently contracts with a private contractor for removal of solid waste, construction and demolition debris, and certain other recycling materials. The Town of Brandon owns and maintains a closed landfill which ceased operation on July 11, 1992. Citizens voted to join the Rutland Country Solid Waste District in 1992.

The transfer station and recycling center operation is a separate enterprise of the Town of Brandon. Charges for the disposal of solid waste are calculated by weight. These fees are the primary revenue source.

Community Facilities

Brandon Free Public Library

In 1900, the Brandon Free Public Library Association was formed and in 1901 it set up operation in the front room of the lower floor of the Parmenter Block, the building it now occupies. In 2001, the library celebrated its 100th anniversary.

The library is staffed by two full-time and one part-time librarian as well as volunteers. In addition to Brandon, the library serves the communities of Sudbury, Leicester and Goshen. The library also provides meeting space for a wide variety of local organizations and programs. Annual circulation is approximately 34,206 books, down from 49,000 books in 2008. The library also has an extensive media collection and a wide variety of periodicals and newspapers. There are a number of internet-accessible computers available to the public. About half of the library's budget is included in the Town's budget, which is voted each year at Town Meeting. The remainder of the budget is raised by the interest from the Library Trust Fund, private donations, fees, property rental, and the fund raising activities of the Friends of the Library.

Brandon Area Rescue Squad (BARS)

BARS serves the towns of Brandon, Leicester, Sudbury and Goshen. The agency has approximately 37 full-time active members, all volunteers, who sign up for shifts to provide coverage 24 hours a day, seven days a week. In 2008 they hired their first employee to assist with daily operations. BARS responded to a total of 690 calls in 2012 in all four towns. The agency routinely provides training for Emergency Care Attendants. Training for Emergency Medical Technicians and Emergency Medical Techniques Intermediate Level (I.V.), is provided by the Rutland Regional Medical Center.

Funds are raised through town appropriations in Brandon and area communities. Several years ago BARS instituted a billing program that has allowed them to purchase and replace equipment and initiate a Community Service Fund to be used for medically related community needs or project.

Brandon Senior Citizens, Inc.

Organized as a private non-profit service organization, the Brandon Senior Citizens own and operate the Senior Citizen's Center in Illingworth Hall located on Forest Dale Road. The Center is open on a varied schedule and serves lunch most Mondays. In addition, monthly dinners are hosted by Brandon Senior Citizens, and the facility is available to rent for private functions. The

Town uses Illingworth Hall for public meetings, such as those of the Planning Commission and the Development Review Board.

Brandon Senior Citizens raise funds through an active fundraising program, through grant programs for senior citizens, and from the Town's budget. The Brandon Senior Citizens have planned internal improvements to the Center and recently completed the expansion and paving of the parking lot.

Brandon-Leicester-Salisbury-Goshen Insect Control District

Brandon is a member town in the local Insect Control District. Brandon's share of costs is included as a budget line item. The District owns equipment and hires a coordinator. Each member town has a spot on the District's Board of Directors. The goal of the District is to provide an integrated pest management program so that the residents of our member towns can enjoy, as much as possible, bug free summers. The District uses volunteers to aid with sampling and treating. They also run a Mosquito Hot Line, so residents can call in troublesome spots.

Educational Facilities Plan

24 V.S.A. § 4382 (6) An educational facilities plan consisting of a map and statement of present and projected uses and the local public school system;

Comment [A13]: Let's have the map be here.

Many long-time residents of Brandon, those who grew up here, recall that The Neshobe School was the elementary school of bus riders, while residents of Brandon "Village" walked to the elementary school in Town.

Comment [A14]: Old photos here?

Today, all elementary education (grades pre-K-6) in Brandon is provided by The Neshobe School. A comparison of enrollment figures since 2003 is shown below. The Town of Goshen has an agreement to also send students to Neshobe School.

Neshobe School: General School Information

School Participation Information	2010-2011	2011-2012	2012-2013	2013-2014
Total School Enrollment	418	403	399	401
Attendance Rate	94.28%	95.80%	94.86%	NA
Retention Rate	NA	NA	NA	NA
Estimated HS Cohort Graduation Rate	N/A	N/A	N/A	N/A

Student/Teacher Ratio	17.13	15.86	15.48	NA
Eligible Special Education	NA	NA	NA	N/AV
11-12 Technical Education Rate	N/A	N/A	N/A	N/A
9-12 Dropout Rate	N/A	N/A	N/A	N/A
Home Study (Number)	NA	NA	NA	NA

Comment [A15]: Better information needed. Or maybe we just dump the whole thing.

Source: Vermont Department of Education School Report <http://education.vermont.gov/data/>

Secondary education, grades 7-12, is provided by Otter Valley Union High School (OVUHS) which also serves Brandon, Pittsford, Goshen, Leicester, Sudbury and Whiting. In addition, students have the option of choosing Stafford Technical Center in Rutland for specialized technical training in a wide variety of fields.

Otter Valley UHS #8: General School Information

School Participation Information	2010-2011	2011-2012	2012-2013	2013-2014
Total School Enrollment	580	576	572	541
Attendance Rate	93.84%	90.62%	96.96%	N/AV
Retention Rate	NA	NA	NA	N/AV
Estimated HS Cohort Graduation Rate	NA	NA	NA	NA
Student/Teacher Ratio	12.74	12.91	12.99	NA
Eligible Special Education	NA	NA	NA	N/AV
11-12 Technical Education Rate	NA	NA	NA	N/AV
9-12 Dropout Rate	NA	NA	NA	N/AV
Home Study (Number)	NA	NA	NA	NA

Source: Vermont Department of Education School Report <http://education.vermont.gov/data/>

The Rutland Northeast Supervisory Union projects that the school-aged populations served by both the Neshobe and Otter Valley schools will decline or remain steady over the next decade. Therefore, capacity of existing schools to serve the need is deemed to be adequate. On the other hand, the demand for technical training is growing, and Stafford Technical Center is constrained by current facility limitations. Both Neshobe and Otter Valley adjust staffing levels each year; the overall number of teachers has been reduced over the last few years.

Comment [A16]: UPDATE

Funding for education comes from a mix of state and local sources. A statewide property tax for education is collected and distributed according to the number of students per district and their demographic needs. The local share of funds is raised predominately through the local property taxes to cover tuition, special education, transportation and administration.

Recent property tax pressure has prompted the Legislature to take a renewed look at Act 60, which is the state's school-funding formula and administrative system in an effort to slow the rise in property tax rates. In Brandon, we have for some years now maintained a "common level of appraisal" of about 1.0, meaning that we get back from the state what we put in for education funds. This is likely to change if enrollment declines or remains steady.

Comment [A17]: MORE

Action steps

- The town shall provide strong protection measures for the aquifers which are the water source for the fire district wells. Any new development in the aquifers must be connected to the town sewer system and priority should be given to extending sewer lines to residences within the aquifer protection area which are not currently connected.

- Expansion of either water or sewer service areas should be made to serve areas of failing in-ground disposal systems or areas where existing wells have low volume or poor water quality. Expansions to serve new development shall be carefully coordinated with land use constraints so that development is directed into the most suitable areas. Developers will be expected to bear all or part of the cost of the expansion.
- The Town should continue its appropriations to such quasi-public agencies as the Fire Districts, BARS, the library, and the Senior Center in order to meet local needs and to provide a broad base of cultural and recreational activities to attract industry, businesses and to support tourism.

ENERGY

24. V.S.A. § 4382 (9) An energy plan, including an analysis of energy resources, needs, scarcities, costs and problems within the municipality, a statement of policy on the conservation of energy, including programs, such as thermal integrity standards for buildings, to implement that policy, a statement of policy on the development of renewable energy resources, a statement of policy on patterns and densities of land use likely to result in conservation of energy.

Introduction

Energy costs and the environmental impacts of energy production both within and beyond our region have made energy an important issue and a planning priority. The Rutland Region is a net importer of energy. making awareness of energy sources, supply, and consumption patterns an essential component of thoughtful development. Recent attempts to bring a gas pipeline to through Rutland County were abandoned, limiting energy resources to those already available.

Goals

- To address to the fullest extent possible at the municipal level the needs of the community while .
- Become a zero-net-energy municipality by 2020.
- To protect Brandon's nonrenewable historic and scenic resources while contributing to the State's goal of a renewable energy future.

Comment [A18]: promoting conservation and patterns and densities of land and energy use to create a resilient Brandon?????????

Policies

- Because of the need to increase local resilience and sustainability, the Town's policy is to prefer local distributed generation & net metering supply to imported base-load utility generation in building a modernized energy infrastructure that meets demand.
- The Town, businesses, and residents will maximize use of available nonprofit, governmental, and private resources and incentives to modernize Brandon's energy infrastructure.
- The Town, businesses, and residents will weatherize, retrofit buildings, and install energy generation technology, maximizing use of available nonprofit, governmental, and private resources. Especially, make public buildings models of energy efficiency.
- Because Brandon's classic, historic pattern of concentrated development surrounded by farm and forest not only protects our rural history, but also enhances our economy and

makes alternative transportation methods like public transit, walking, and biking more viable, the Town's policy is to protect this settlement pattern.

- Because historic structures are vital to our economy, the Town's policy is to protect existing structures, conserving resources that would be expended on or destroyed by greenfield development.

Action Steps

- The Select Board will establish and empower a Town Energy Committee to assess community values and provide draft revisions to the Energy section of this Plan.
- The Town Manager will report on the feasibility and costs of power generation on municipal buildings.
- The Town will retrofit municipal buildings for energy efficiency to the maximum extent possible by adhering to the highest industry standards.
- The Planning Commission will incorporate Vermont state energy standards for new construction and remodeling projects as part of the zoning ordinance .
- The Town shall ensure that future replacements of street lights use the latest technologies and be designed according to the guidelines in the *Outdoor Lighting Manual for Vermont Municipalities*.
- The Town will continue to promote commuter car pooling by maintaining Park-and-Ride areas .
- The Town will continue to support of public transit service along the US Route 7 corridor .
- The Town will implement working-landscape friendly zoning regulations to maximize the wise use of our biomass resources.
- The Town will work with private landlords to promote weatherization as part of Vermont's "Button Up" campaign.
- Enforce 23 V.S.A. § 1110, which prohibits idling of motor vehicles.
- Establish one or more solar-powered electric-car-charging stations in the Central Business District and Forest Dale through state Electric Charging Station grants.

Comment [A19]: Where?

Comment [A20]: How?

Analysis

Statewide Trends and Data

Sector	Percent of Total (2005)	Percent of Total (2012)
--------	----------------------------	----------------------------

Electricity Production	40	40
Transportation	32	38
Residential	30	29
Commercial	19	18
Industrial	18	15
<i>Energy Information Administration, State Energy Data. Available: http://www.eia.doe.gov/emeu/states/state.html?g_state_a=vt&g_state=VERMONT </i>		

Comment [A21]: We have "Electric"???

Energy resources

According to the *Rutland Regional Plan*, nearly 40% of the energy consumed in Vermont comes from electricity. In Brandon, Green Mountain Power (GMP) services electric customers through its Middlebury district office. The right-of-way for the main transmission line of 46,000 volts runs north-south along US Route 7. Vermont Electric Power Company (VELCO) maintains a larger 115 kVolt line and a 345 kVolt line that runs through the western part of town. The lines provide power to the Burlington area through the Middlebury substation. There are two local distribution substations. One is near Otter Valley Union High School and serves the school and nearby homes while the second is located on Walnut Street and provides over 16,000 volts of electricity to the rest of Brandon, Forest Dale, Goshen and Leicester. The the "North West Reliability Project" 354 kVolt line runs parallel to the older 115 kVolt transmission line.

GMP's power is purchased mainly through long-term contracts with Hydro-Quebec (45%).¹⁵ This is a stable, reliable, base-load power source. Smaller amounts of electricity are purchased from domestic hydro (47%), nuclear (7%), wood (2%), GMP's Cow Power (methane, 0.1%), and other sources.¹⁶

Conservation & Distributed Generation

Brandon is unlikely in the near term to achieve zero-net-energy townwide, given the current state of technology and the costs associated with upgrades. Nonetheless, based on a review of the Vermont Energy Atlas, Brandon does have some energy-production resources:

Solar: Brandon's geography lends itself well to small (residential, farm, or business) and community solar installations. It is anticipated that the growth of solar energy's popularity in Vermont will be mirrored in Brandon.

¹⁵ <http://www.greenmountainpower.com/fuel-mix/>

¹⁶ Vermont Department of Public Service Fuel Price Report for March 2008. Available: <http://publicservice.vermont.gov/pub/fuel-price-report/08march.pdf>

Microhydro: Brandon may have opportunities for small-scale hydropower (“microhydro”) installations on the Neshobe River and Otter Creek, both of which have lengthy courses through town.

Bioenergy: Brandon has a thriving, small-scale firewood industry and has potential for switchgrass or similar biomass development. Biomass

Geothermal: Brandon has some, though as-yet unquantified, geothermal potential.

Unlike some of our neighboring towns, Brandon possesses very limited potential for wind generation, and almost no suitable areas for large-scale wind-farm development.

Needs

Residential Heating

Almost a third of Vermont’s total energy demand is for heating purposes and nearly 60% of the heating fuel used in the state is No.2 heating oil.¹⁷ In Brandon, over two-thirds of homes are heated with oil. According to the Census, the majority of the housing units use fuel oil as the major heating source; however, that number has decreased from over 73 percent in the year 2000. Propane and wood are also popular choices, with other fuel sources not widely used.

Recent booms in oil and natural gas production have resulted in falling prices in 2014, and prices are expected to remain steady in the short term. Still, heat insecurity remains a real and painful problem for many families, who often live in housing with outdated heating equipment and little or no effective insulation.

Comment [A22]: LIHEAP data needed.
<http://liheap.org/>

House Heating Fuel: Brandon

Source	Homes (2000)	Percent (2000)	Homes (2013)	Homes (2013)
Fuel oil, kerosene, etc.	1151	73.2	1114	67.5
Bottled, tank, or LP gas	197	12.5	250	15.2
Wood	127	8.1	215	13
Electricity	60	3.8	17	1
Utility gas	18	1.1	8	0.5
Other fuel	7	0.4	37	2.2
Coal or coke	6	0.4	9	0.5
Unknown	6	0.4	0	0

Comment [A23]: ??????????

Comment [A24]: Really?

¹⁷ <https://www.uvm.edu/pss/vtcrops/?Page=energycrops.html>

Solar energy	0	0.0	0	0
<i>Sources: U.S. Census 2000; 2009-2013 American Community Survey 5-year estimates</i>				

Transportation

Transportation is a significant source of energy use in the Rutland Region and Vermont as a whole, due to our rural nature. Assuming Brandon's energy use can be approximated by state trends, Brandon's transportation needs make up about one third of total energy consumption (see state data above). Cutting costs for transportation will mean promoting the use of more efficient and alternative-energy vehicles, reducing trips out of town, encouraging pedestrian-friendly development, and developing public transportation options.

With the growth of public transportation being offered by the Marble Valley Regional Transit District (MVRTD or, "The Bus") in the Rutland region in conjunction with Addison County Transit from Middlebury, citizens are being given an opportunity to reduce energy consumption. As demonstrated by the results of the Community Survey administered by the Planning Commission in 2008, Brandon residents are strongly in favor of these measures: increasing pedestrian infrastructure, encouraging bike paths, and ride-share/park-n-ride programs.

In addition, the data show an alternative to the commute: working from home, which increased from just 2.5 percent in 2000 to 8.2 percent in 2015.

Brandon Residents Commuting to Work: workers 16 years and over

Comment [A25]: UPDATE

	Number (2000)	Percent (2000)	Number (2015)	Percent (2015)
Car, truck, or van – drove alone	1511	80.8	1374	73.8
Car, truck, or van – carpoled	215	11.5	223	11.9
Worked at home	47	2.5	149	8.2
Walked	90	4.8	111	6.1
Mean travel time to work (minutes)	24.8	(x)	24.1	
Public transportation (including taxicab)	0	0	0	0
Other means	8	0.4	0	0
<i>Source: U.S. Census 2000</i>				

Conservation

Conservation measures recommended by EfficiencyVermont and by the *Regional Plan* include the installation of energy-saving compact fluorescent light bulbs and green building practices. In addition to proper insulation and weatherization, building design can help reduce energy costs through south-facing windows to save on heating and off-peak thermal energy storage to save on cooling costs.¹⁸

¹⁸ *Rutland Regional Plan*, Adopted April 15, 2008.

HOUSING

(10) A housing element that shall include a recommended program for addressing low and moderate income persons' housing needs as identified by the regional planning commission pursuant to subdivision 4348a(a)(9) of this title. The program should account for permitted accessory dwelling units, as defined in subdivision 4412(1)(E) of this title, which provide affordable housing.

Introduction

Along with its unique downtown streetscape, Brandon has an large number of architecturally significant single family homes, several planned development areas with more modern style cape and ranch homes, and throughout town a variety of home styles ranging from late 18th century to modern. Of note are the 242 Structures located in the Brandon Village Historic District, as listed in the National Historic Register, many of which are single family homes.

Goals

Maintain, preserve, and when appropriate revitalize the unique architectural assets of the town, many of which are residential. Provide a wide selection of housing types and styles to encourage a diverse population.

Policies

- Encourage the preservation and renovation of existing homes, especially unique and historic properties.
- Encouraging infill development where applicable.
- Encourage private homeownership and support property owners in the maintenance and improvement of residential neighborhoods.
- Encourage a housing balance with an appropriate mix to meet all market needs.
- Continue to support efforts to provide safe and affordable housing.
- Promote cluster development that minimizes consumption of land and allows for conservation of farmlands, forests and open space.
- Encourage energy efficiency upgrades to account for more modern construction practices.

Background

Existing Conditions

Brandon has an existing settlement pattern typical of New England towns. Most of the commercial activity and higher density residential development is in and near the historic core of the community. The density of residential development decreases radiating out from the center of town and transitions to a mix of industrial, commercial, agricultural and recreational uses. Development is also concentrated along the main arteries radiating from this center. New development typically occurs toward the perimeter of the village area, although the potential for infill development exists. The two largest residential concentrations are in the Brandon Village area and Forest Dale community, but there are a large number of homes spread throughout the more rural parts of town as well.

While the majority of Brandon residents live in single-family homes, there is a wide variety of housing options in town, including multiple-dwelling structures of up to six units, senior housing, and condominiums. Brandon has a wider variety of housing options than its neighboring communities. In 2010, 64% of occupied housing was single-family detached units, 14% mobile homes, and 22% were structures containing two or more units.

In 2010, 79% of housing units were owner-occupied and 21% were renter occupied. Brandon's home ownership ratio is slightly below that of other more rural towns in the region, as would be expected for a larger, more diverse community. According to the 2005 Rutland County Housing Needs Assessment, Brandon has a significantly higher rental housing supply than towns of comparable size in the region.

Seasonal or vacation housing units, common in other Rutland County communities, are less than 3.9% of the housing in Brandon according to the 2010 Census. The absence of a significant summer or winter recreation area, such as a ski area or lake, has lessened this type of development in town. There are a number of Brandon residents who spend a portion of the winter away from Vermont.

Brandon's population is composed predominately of family households. According to the 2010 Census, there were 1,854 households in Brandon and a total population of 3,966 persons. Families made up 64% of the households in 2010, and the average household had three members. Of the families with children under the age of 18, a large portion, seventy-seven percent are traditional, married-couple families. The "over 65" age group accounted for 16.5 percent of Brandon's householders.

Comment [A26]: What does this mean?

Brandon has a significant proportion of senior and affordable rental housing units in multi-family buildings. Most of them were developed by renovating existing institutional buildings (Brandon Training Center) or commercial buildings (several downtown locations). Due to

Vermont Statutes, they are granted special tax considerations, which affects municipal revenues.

Since 1990 land values have appreciated significantly in Brandon. That fact, combined with the cost of permitting and improving building lots (water, electrical power, wastewater, vehicle access, etc.) has led builders and developers to target households with higher incomes for new construction. Along with being something of a bedroom community for Rutland and Middlebury, Brandon has always been attractive to people purchasing second or retirement homes.

Housing Market

The Brandon market has mirrored the national trends over the past 10 years, with a steep increase in housing sales and price appreciation, followed by a decline as the housing market crashed and the recession occurred. An increase in foreclosed properties also has had a great impact on housing prices and sales. Nevertheless, Brandon, similarly to the rest of Vermont, has not seen the same duration or scale of volatility as markets elsewhere.

Brandon has a moderately priced housing market. In 2005 there were a total of xxx homes sold with an average selling price of \$175,617.00. In 2006 there were a total of 19 homes sold with an average selling price of \$214,508. Xxxxx In 2014 there were 33 non-private home sales at an average selling price of \$148,529. INSERT SALES TREND CHART HERE. This mirrors the overall state and national trends following the boom and bust – and now slow recovery – from the housing bubble.

Affordable Housing

Homeownership in Vermont is difficult for many households due to the high upfront costs of purchasing a home, the increase in sales prices in recent years, and the tightening of credit requirements following the housing bubble collapse. Brandon has a considerable number of rental housing units dedicated to low income residents and seniors that have been developed in recent years by non-profit organizations such as the Rutland County Community and Trust and NeighborWorks of Western Vermont.

Aside from housing specifically set aside for lower income residents, the Town can encourage additional units to be created at affordable prices by allowing a wide range of housing types. For example, accessory dwelling units, as defined in State Statute and the Brandon zoning ordinance, are a permitted use and represent a simple way of encouraging new rental units while maintaining the general character of existing single-family neighborhoods. Other options such as allowing duplexes or multi-family houses in areas where growth is desirable, will

generate more rental housing while allowing smaller lot sizes will generally translate into more affordable prices for people seeking to own.

Although there are a number of affordable housing options in Brandon, the total need is not met. There is a widening gap between wages and housing costs within Vermont as a whole, and Brandon is not an exception. Below is the estimated hourly wage needed to afford the related housing size.

<i>(source: Vermont Housing Data www.housingdata.org)</i>		
Housing wage, 2014	Brandon	Vermont
Number of Bedrooms		
0	\$ 11.35	\$13.91
1	\$12.52	\$15.20
2	\$15.87	\$19.36
3	\$19.75	\$24.55
4	\$24.10	\$29.21

The 2010 per capita income in Brandon was _____. The average wage was _____.

Comment [A27]: Data needed

Housing affordability can be tied directly to a number of other factors such as heating efficiency, whether or not automobiles are necessary based on location, and maintenance costs for the building and the land. Therefore, encouraging a diverse housing stock is one way of helping to meet the overall need.

Rental Housing

A large portion of affordable housing is usually in the form of rental units. The Town of Brandon adopted a Rental Housing Code in 1983 and updated it in 1999. Since all “non-owner occupied housing facilities” and “owner occupied housing facilities wherein two or more rooms are rented” are required to be inspected prior to occupancy, an accurate inventory of rental units is readily available. The Rental Code, in addition to enforcing a higher standard of rental housing, gives the town a fairly accurate picture of available rental units. A Certificate of Occupancy must be issued prior to occupancy by a new tenant and indicates the number of rental units that come onto the market in a year.

Recommendations

- Encourage the preservation and renovation of existing housing.
- Educate property owners as to available tax credits and other incentives for the rehabilitation of old or substandard housing.
- Revise local zoning to encourage new growth in existing residential areas, and to encourage residential mixed-use in the downtown area.

- Require pedestrian friendly development (sidewalks and bike paths) with any new significant residential subdivision or development.
- Allow for a wide-range of housing units and smaller lot sizes to encourage private sector creation of housing that is more affordable to average Vermonters.
- Include provisions in the local zoning which allows for review of site conditions (stormwater runoff, erosion, floodplain and wetland impacts, etc), settlement patterns, natural features, the placement of driveways, the location of building sites including setbacks, and other aspects of development to reduce impact to sensitive natural areas, prime agricultural land, water quality, open spaces, the working landscape and important views and vistas.

Comment [A28]: •Efficiency Vermont, Neighbor Works, VERI, etc. contact info. [HERE](#)

CHILDCARE

Introduction

As more households have more than one income per family, parents of young children need safe, convenient, and affordable childcare options. There currently are at least **seventeen** facilities in Brandon, seven of which are licensed centers. The remaining ten childcare facilities are registered residential operations. Information about existing providers is available on-line from the Vermont Department of Children and Families.

Comment [A29]: New stats

In addition to its important to working parents, childcare is a big part of Vermont's **economy**. Current supply in Brandon does not meet the demand for childcare, especially after-school care. While the SOAR program and the Recreation Department are able to fill some of these gaps, these programs do not at present meet the needs of many working parents. Thus, Brandon offers a prime opportunity for motivated, enthusiastic, and entrepreneurial childcare providers to open up shop and contribute both to Brandon's bottom line and to its livability.

Comment [A30]: INSERT facts and figures from report.

Background / Analysis

Children under 15 years of age in Brandon comprised about 17.2 percent of the population according to the 2010 Census figures, slightly down from about 20 percent in 2000. Of those children, 229 were under the age of five, and 238 were five to nine years old. Families with children under the age of 18 formed 25.5 percent of Brandon households (a decline from 32% in 2000). While 8.8 percent of Brandon's families were listed with poverty status, over half of those families have children under the age of 18 (57 of 100 families in poverty), which represents a marked decline from the 200 Census (74 of 80 families in poverty). Furthermore, female-headed families living in poverty number 33, all with children under the age of 18, a decrease from 55 in 2000. **On the other hand**, given increasing mobility among lower-income residents, as well as the small sample size, the precise numbers may vary widely from year to year or even season to season.

Comment [A31]: New stats

While the benefit of affordable child care is widely acknowledged as a boost for the economy and workforce, it is especially important to the survival of families working to make ends meet. It is difficult to assess the need for child care facilities in Brandon because of the high proportion of adults who commute to other communities to work. It is expected that many parents choose to have their children near to their places of work, thus potentially reducing the need for facilities in Brandon. Even so, it is reasonable to assume that child care is potentially an important issue to Brandon residents, given the high percentage of families living in Brandon who have young children. In addition, attention to the issue of affordable child care may also help promote Brandon as a favorable location for young families.

Goal

Expand the number and variety of childcare providers, with an emphasis on meeting gaps in current availability.

Policies

Encourage flexibility regarding location and facility type.

Action steps

- Continue to permit the use of single family homes in Brandon for small-scale family child care facilities as home occupations.
- Review regulations and assess potential barriers to entry.

RECREATION

Introduction

Recreation is an important aspect of Brandon's community and family life. Brandon's proximity to a variety of outdoor activities provides a wealth of individual opportunities for recreation, while group activities are coordinated by several different organizations.

Brandon's recreational infrastructure serves as an attraction to residents and friends in near-by towns. Many activities for people of all ages are organized by Brandon's Recreation Department. The Brandon Senior Citizen Center coordinates activities for area residents in the upper age brackets. Devoting resources to recreation will contribute to a healthy living environment for the current and future community of Brandon residents.

Goal

Create a physical and social environment in which recreation is a key aspect of healthy community life and daily activity for all Brandon's residents.

Policies

- Provide a range of year-round recreational activities and opportunities for people of all ages.
- Continue to maintain and expand recreational facilities and the Town's Recreation Department programs.

Recreation Background

There are numerous opportunities for recreation provided by a mix of public and private organizations. The Police Department, Brandon Fire Department, and the Brandon Area Rescue Squad (BARS) organize the annual Safety Day, which includes information on bike safety. Free bike helmets for children are available through the Police Department and BARS. The Town maintains several outdoor parks and facilities. Active recreational facilities include Estabrook Park, just north of the Village, and the Seminary Hill playground, located in the Village. These facilities combined have tennis and basketball courts, a ball field, playground equipment, and an ice skating rink in winter. Passive recreational spaces include Central Park, Kennedy Park, and Crescent Park. In addition, the recreational facilities and fields at the Neshobe Elementary and Otter Valley Union High Schools are available for limited use and activities. The Brandon Town Forest offers great back country hiking and snowshoeing opportunities along the eastern boundary of the town line. Examples of private offerings include the Bill Koch Ski Club, the Neshobe Sportsman Club, the Rutland Area Physical Activities Coalition, the VAST Trail network, and the MLA Youth Soccer League.

Brandon's Recreation Program

Brandon supports a Recreation Department which provides a full array of recreational opportunities for town residents. The Recreation Department has been directed to provide a variety of year-round programs, which are publicized in a seasonal brochure. The Recreation Department sponsors programs for people of all ages from Brandon and surrounding communities and include a variety of sports activities as well as community gatherings and field trips. Many local groups and citizens contribute to the efforts of the Recreation Department and events are often a collaborative effort of many organizations. A mix of town funds, fees, grants, and individual and business contributions supports the Recreation Department. It is the goal that programs, activities, and events be self-sustaining.

Recreation Infrastructure

There are also many informal recreation opportunities in and around the Town of Brandon. Popular outdoor recreational activities include hiking, skiing, snowshoeing, fishing, birding, and hunting. The Vermont Association of Snowmobile Travelers (VAST) maintains a trail system for snowmobiling in Brandon and Forest Dale, much of which is on private land with owner permission.

A portion of the Green Mountain National Forest is located in Brandon and offers access to an extensive trail system. Brandon serves as a gateway community to the Moosalamoo National Recreation Area located within the National Forest boundaries. The Moosalamoo Association works to conserve the physical landscape in a way which preserves the spiritual and recreational experiences that draw visitors and residents to the area.

The Neshobe River and Otter Creek are excellent waterways for recreational activities, although the absence of public access points inhibits their use. In order to assure their recreational value, maintenance of their water quality should be a consideration when making decisions about adjacent and upstream land uses and activities.

While they are not within Brandon's boundaries, Lake Dunmore, Fern Lake, and Silver Lake offer exceptional recreational opportunities. Branbury State Park at Lake Dunmore has camping, picnicking, boating, and swimming facilities. Lake Champlain is within 20 miles of Brandon and provides, according to the pros, some of the best bass fishing in the world. These lakes have a positive impact on Brandon and its businesses. Many visitors to Brandon stay in our inns and bed and breakfasts because of their close proximity to our lakes, ponds, and rivers. The local stores and eateries benefit as part of the "trickle down" effect.

Privately-owned facilities for camping, golfing and fitness round-out the recreational options in Brandon. The 18-hole Neshobe Golf Club is one popular, privately-owned recreation center. For

more information regarding privately owned recreation facilities, please contact the Brandon Area Chamber of Commerce.

Action steps

- The Recreation Director, with assistance as needed or desired from town staff, commissions, and residents, will complete the *Recreation Master Plan* for the Town of Brandon.
- Support the Brandon Recreation Advisory Committee in their efforts to plan for and promote recreational opportunities.
- Develop a capital budget for the Recreation Department that will continue to seek grant funding for programs and facilities improvements.
- Investigate the acquisition or construction of an indoor recreational facility that could potentially include a gymnasium.
- Provide appropriate staffing to support recreational programs and opportunities for residents of all ages.
- Support the revitalization of the Brandon Town Hall as a community center.
- Support the efforts to establish a Boys and Girls Club in Brandon.
- Work to secure and maintain public access to the Otter Creek and Neshobe River for recreational uses such as canoeing, kayaking, and fishing.
- Promote the clean up of lower Carver Street and the Syndicate Road to provide for more attractive recreational opportunities.
- Develop town-owned riverfront properties for public use.
- Pursue opportunities to construct paths and trails for biking, walking, hiking, biking, and skiing. Develop maps that promote these areas and opportunities.
- Encourage links between existing and future recreational facilities and resources to further extend and integrate the system (for example between the village and Estabrook Park).
- Require sidewalks and other pedestrian and bicycle friendly improvements as a condition of future planned residential and other major development.

Comment [A32]: ?????

HISTORIC AND CULTURAL RESOURCES

24 V.S.A. § 4382 (5) A statement of policies on the preservation of rare and irreplaceable . . . scenic and historic features and resources.

Introduction

Brandon and Forest Dale possess “an architectural legacy, a cultural history, and a unique visual identity” that contribute to the creation of community, historic pride, and economic advantage. These assets must be carefully managed.¹⁹

Brandon has a wide variety of historic resources that enhance the character of the community, provide opportunities for residents, and contribute to the economic vitality of the town. More than 250 buildings in Brandon and Forest Dale are on the state historic register, and its historic character is a vital part of the town’s appeal. A detailed exploration of the Town’s major historic buildings can be found in the Brandon Workbook (2002), which should be considered a companion volume to this Plan. The Workbook identifies Brandon’s historic resources, especially in the town center, as unique among Vermont towns because Brandon has not been harshly impacted by modern pressures such as strip development and big chain stores. This has allowed the town center to retain much of the character and charm of a turn-of-the-century village. This character is critical both to Brandon’s strong sense of community and as an economic resource. The beauty and character of the town and its lively centers in Downtown and Forest Dale are key elements of our appeal to both new residents and visitors. In other words, Brandon’s historic character is a vital economic asset, and preserving it is good business. Brandon possesses “an architectural legacy, a cultural history, and a unique visual identity” that contributes to the creation of community, historic pride, and economic advantage. These assets must be carefully managed.²⁰

Brandon also benefits from a strong set of cultural resources. In addition to the recreational opportunities and historic charm, Brandon has a thriving arts community. Brandon residents lend energy and enthusiasm to cultural organizations, religious groups, and social service initiatives. Brandon has many active organizations working to enhance the community with cultural events. These organizations promote fundraising, ancestral heritage, economic

¹⁹ Much of the information and language of this section has its roots in the Brandon Workbook (updated by Brandon historic Preservation Commission, 2002).

²⁰ Summarized from Brandon Workbook (updated by Brandon historic Preservation Commission, 2002).

development, youth, social service and education. The churches contribute many social and community services as well as serve as historic resources. The Brandon Artists Guild provides space for member artists to display and sell their art. In addition, the "artists' space" at the Granary on Union St. provides affordable rental studio space for local artists. Brandon Town Players is a community theater organization which stages shows, revues and dinner theater. This Plan supports the growth of arts and cultural organizations in Brandon.

Goals

Protect the town's historic settlement pattern and architectural assets as a significant, non-renewable resource that creates a sense of place and community well being.

Policies

- Ensure the preservation, restoration, and adaptive re-use of historic public buildings and privately owned structures.
- Encourage the compatibility of new commercial construction within the Town with the historic character of the community.
- Support the protection and preservation, where appropriate, of significant historic structures, sites and districts, the townscape and landscape, as well as prehistoric and significant archaeological sites in the Town of Brandon.
- Encourage Heritage Tourism.
- Encourage community art projects, cultural events, festivals and cultural tourism.
- Encourage cultural resource groups to collaborate and coordinate with the Town and other interested parties.
- Encourage partnerships with local community organizations for various projects (such as park improvements, downtown redevelopment, and events).
- Utilize public facilities and space as venues for artists, historical exhibitions, and cultural events.
- Support the Brandon Public Library, Brandon Senior Citizen's Center and other quasi-public organizations in Brandon.
- Support the Town Hall improvement efforts for more comfortable use for public events and meetings.
- Support the growth of arts and cultural organizations in Brandon.

Background

Brandon has a rich prehistoric and historic legacy as is evident in the settlement and land use patterns, residential structures, remains of old commercial and industrial businesses, cemeteries, archaeological sites, and community gathering places throughout the town. Brandon is particularly rich in the historic artifacts of the 19th century, particularly, as noted above in buildings and structures. The legacy of the anti-slavery movement and the civil war are particularly strong here and constitute an opportunity for heritage tourism. Early 19th century industrialization is also very evident in Brandon. Many aspects of modern life in Brandon are touched by the past. Our magnificent Greek Revival town hall is the most prominent public example of this legacy.

Several organizations in Brandon are dedicated to the preservation of the town's historic resources as well as public education. They include the Friends of the Brandon Town Hall, the Stephen A Douglas Birthplace Community Center, Inc., which includes the Brandon Museum, the Lake Dunmore Chapter Daughters of American Revolution, and the Brandon Historic Preservation Commission. These groups are mainly supported through grants and private resources along with some public funding.

Brandon Village, which encompasses the majority of downtown, is listed on the National Register of Historic Places (see Figure 1). Other sites on the Register include the Green Mountain Iron Furnace in Forest Dale and the Sanderson Covered Bridge on Pearl Street.

The State of Vermont also has a Register of Historic Places and lists three historic districts: Brandon Village, Rossiter Street and Church Street.²¹

In the late 1980s, the State Division of Historic Preservation published an inventory of the historic structures in Rutland County entitled, The Historic Architecture of Rutland County. The publication details the historic districts and buildings in Brandon and is an excellent source of information. The Brandon Workbook was developed in the late 1980s and updated in 2002 by the Brandon Historic Preservation Commission. It has guidelines for historic preservation and design improvements within the downtown area and is also a reference for architectural, historic and townscape information.

There are many prehistoric archaeological sites within the Town of Brandon, some documented and others yet-to-be examined.

²¹ The three districts are Brandon Village, which is the vast majority of the village, as well as the Rossiter Street and Church Street historic districts.

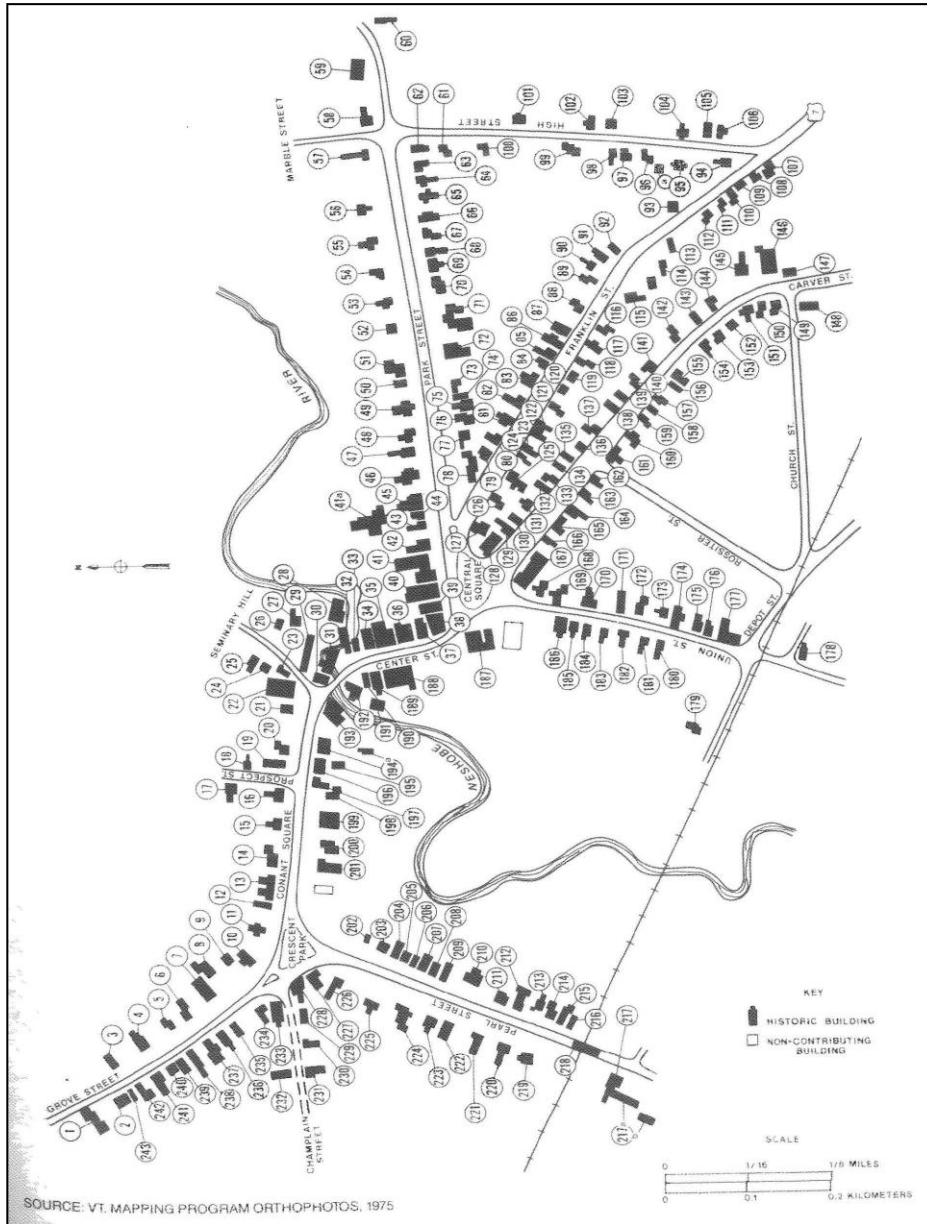


Figure 1. Brandon Village Historic District map (source: Vermont office of Historic Preservation).

Action steps

- Leverage Brandon's Certified Local Government (CLG) and Downtown Designation status by participating in programs for downtown improvements and pursuing grant opportunities, in collaboration with community organizations, to continue to protect and preserve Brandon's historic resources.
- Obtain a state Village Center designation for Forest Dale to access state grant programs, tax incentives, and other resources.
- Use federal guidelines to document historic structures, and favor preservation over demolition in the zoning ordinance.
- The Historic Preservation Commission shall train the Select Board, Development Review Board, Planning Commission, and Zoning Administrator in the management of historic information and documentation and preservation of historic resources.
- The Historic Preservation Commission shall develop and maintain a complete inventory of historic structures, sites, and settlement patterns in support of Brandon's planning and zoning.
- Encourage the use of the Brandon Workbook as a guideline when developers are renovating historic structures and adopt these guidelines for historic preservation
- Encourage a rewrite and update of the History of Brandon, a book written and published by the Town of Brandon in 1961.
- Maintain a library of resources in the town office for historic preservation and restoration.
- Support public and private efforts to preserve and restore historic resources with the help of organizations such as the Brandon Historical Society and the Brandon Historic Preservation Commission.
- Support municipal and private efforts to preserve the Brandon Town Hall and the Stephen A. Douglas Birthplace as important historic and current cultural resources.
- Pursue a heritage byway designation from the Green Mountains to Lake Champlain.
- Encourage partnerships with local community organizations for various projects (such as park improvements, downtown redevelopment, and events).
- Utilize public facilities and space as venues for artists, historical exhibitions, and cultural events.
- Support the Brandon Public Library, Brandon Senior Citizen's Center and other quasi-public organizations in Brandon.
- Support the Town Hall improvement efforts for more comfortable use for public events and meetings.
- Support the growth of arts and cultural organizations in Brandon.

- Make use of the town plan to encourage the preservation of Brandon's village architecture
- Protect Brandon's village character and historic architecture as key economic assets through making the impact on historic character a mandatory consideration in the planning of public projects.
- Encouraging heritage tourism
- Utilize Brandon's Certified Local Government (CLG) and Downtown Designation status by participating in programs for downtown improvements.
- Use federal guidelines to document historic structures, and consider alternatives, prior to their removal or demolition.
- Support the Historic Preservation Commission in an effort to train in the management of historic information and documentation of historic resources.
- Develop and maintain a complete inventory of historic resources.
- Encourage the use of the Brandon Workbook as a style guideline when developers are renovating historic structures and adopt these guidelines for historic preservation
- Pursue grant opportunities, in collaboration with community organizations, to continue to protect and preserve Brandon's historic resources.
- Encourage a rewrite and update of the History of Brandon, a book written and published by the Town of Brandon in 1961.
- Maintain a library of resources in the town office for historic preservation and restoration.
- Support public and private efforts to preserve and restore historic resources with the help of organizations such as the Brandon Historical Society and the Brandon Historic Preservation Commission.
- Support municipal and private efforts to preserve the Brandon Town Hall and the Stephen A. Douglas Birthplace as important historic and current cultural resources.
- Pursue a heritage byway designation from the Green Mountains to Lake Champlain.

ECONOMIC DEVELOPMENT

24 V.S.A. §4382 (11): An economic development element that describes present economic conditions and the location, type, and scale of desired economic development, and identifies policies, projects, and programs necessary to foster economic growth;

Introduction

Planning for economic development presents challenges in a small community but is an important part of a town's planning goals. Economic development, once the sole province of the private sector, is the process by which the community sets out to improve the climate for retaining established and attracting new businesses that support jobs and sustain tax revenues. Brandon derives most of its revenue from the taxation of local property to support municipal services. Brandon needs to be active in managing economic growth to ensure the future of its tax base and quality of life.

Brandon has many valuable assets including water and sewer capacity, available commercial buildings and land, a pre-permitted industrial park, an excellent school system, a vibrant historic downtown, a well-educated workforce, proximity to fiber optic, and a range of social and community services, which make it an attractive location for businesses as well as a desirable place to live and work.

Brandon also has significant recreational, historical, cultural, and natural resources, as discussed elsewhere in this Plan. These add substantially to the quality of life and can influence businesses and individuals considering locating or investing in Brandon. These resources are necessarily part of a fully integrated strategy for economic and community development.

Goal

Create an economic climate that retains and attracts businesses which contribute to our quality of life.

Policies

- Maintain and enhance a diversified local economy.
- Encourage improvements to the visual appearance, accessibility and character of downtown which accommodate both the historical integrity and modern needs of the village area.
- Encourage targeted economic growth in designated development areas, specifically at Park Village and in downtown Brandon.

- Maintain infrastructure to support existing development and economic growth.
- Include Brandon's Recreational, Historical and Cultural assets as a strong element when planning for development.

Background

Economic Characteristics²²

Brandon has been identified as a “Sub-Regional Center” located between Rutland, one of Vermont’s largest cities, and Middlebury, an educational and cultural focal point. A Sub-Regional Center is a place that exerts a market pull over a multi-town area, but does not have a sufficient business concentration to be truly regional in scope.²³ Brandon has several large businesses as well as numerous smaller establishments, many working in niche markets. Brandon has a diverse economic base, a thriving, attractive and pedestrian-friendly central business district and a skilled labor pool. It is a relatively inexpensive town in which to rent or buy commercial or residential real estate. Recent decades have been characterized by steady growth in all aspects, from tourism and service businesses to industries selling products both nationally and internationally.

Businesses

The key to Brandon's economic stability and growth lies in the diversity of its economy. As a business center for surrounding communities, Brandon enjoys a greater number and variety of commercial and professional services than its local population demands. Brandon is home to several of the larger employers in Rutland County. Figure 21 in the Technical Appendices lists the most recent county data, but since it is from 2005, it does not reflect national economic upheavals that took place in 2008. Important employers in Brandon include manufacturers, banks, builders, the public school system and medical facilities.

Other major contributors to Brandon’s economy are the numerous smaller businesses operating in Brandon. These employers are in a variety of sectors and provide steady employment opportunities. According to the Small Business Administration, small firms represent 99.7 percent of all employer firms nationwide, and employ about half of all private sector employees. In Vermont, small firms employed 63.6 percent of the state’s non-farm private labor force in 2004. Brandon’s businesses confront the same challenges which businesses everywhere face in a global economy.

Workforce

In 2000, Brandon, with 3,917 residents, was the fourth largest town in Rutland County and has 6.2% of the county's population. In 2010, with 3,966 residents, Brandon remained the fourth-

²² See Figure 20 in the Technical Appendix for the “Demographic-Economic Comparison Chart of Rutland County Towns” for economic indicators for area communities and Brandon’s relative relationship within the region.

²³ 1997 Vermont Downtown Economic Impact Study, Douglas Kennedy and Associates. See Figure 20 in the Technical Appendix.

largest town in Rutland County, but it held a greater percentage of the population, at 11.8 percent. In other words, Brandon has remained an attractive place to live for Rutland County's workforce.

The annual average unemployment rate is 4.1 percent of the population in 2010, a marked decline from 12.4 percent of the population in 2000. According to the 2010 Census, a majority of the employed residents of Brandon work educational services (18%), administrative, support, and waste-management services (18%), and wholesale trade (13%). Manufacturing, construction, retail trade, and professional, scientific, and technical services accounted for most of the other employment sectors where Brandon residents were employed.

The decline in unemployment has come with a fundamental shift from manufacturing (40% in 2000) as a main source of employment for Brandon residents. This shift, as well as the shift away from government (23% in 2000) has kept Brandon wages stagnant, even as the median income in Vermont rose overall.

Comment [A33]: Median income data?

in manufacturing (40%), government (23%) and retail trade (14%). Construction, professional and related services, entertainment services, and health services accounted for most of the other employment sectors where Brandon residents were employed.²⁴ Brandon residents earn wages slightly below the state median.²⁵ 61.9% of the Brandon workforce commutes out of town to work (an assumption based on a 14 or more minute commute).²⁶

Economic Development Activities

The Brandon Area Chamber of Commerce, one of four chambers in Rutland County, works to support local businesses as well as coordinate and promote tourism marketing in the region. The Brandon Chamber has over 200 members and is active in community-wide initiatives. Both the Chamber and the Town of Brandon have developed web sites which serve to promote the town and provide information to both residents and visitors.

Park Village has been developed commercially, industrially, and residentially. Some of the growth at Park Village has been caused by the relocation of businesses formerly located in downtown Brandon, creating more available commercial space in the village. Filling the vacant retail and office space in downtown Brandon with compatible businesses is a high priority for the Town and Chamber of Commerce. The Brandon Industrial Park, located off Arnold District Road near the Park Village complex, is pre-permitted for industrial use, and offers lots suitable for a variety of uses.

Brandon's central business district and surrounding core is a Vermont Designated Downtown. This designation makes available a number of tax credits and other incentives designed to

²⁴ Technical Appendix, Section E. Employment, Figure 18.

²⁵ According to the 2000 Census, Vermont's 1999 median household income was \$40,856 while Brandon CDP median household income was \$34,609.

²⁶ 2000 Census Data indicates that 846 or about 64% of Brandon's 1330 employed persons commute to work.

strengthen the downtown area. The Brandon Downtown Development Corporation helps to oversee this program.

The Town of Brandon funds an Economic Development Officer position. This position is charged with retaining and recruiting new businesses and organizing municipal projects aimed at improving facilities and infrastructure that are vital to new economic development initiatives.

Action steps

- Maintain an active Downtown Development Corporation as required by VSA Chapter 24, Title 76A for Downtown Designation status.
- Reapply for Downtown Designation status in calendar year 2017 and continue to actively use this designation in seeking grants and other economic development activities.
- Write a capital improvement plan for the downtown development district as required by VSA Chapter 24, Title 76A for Downtown Designation status.
- Retain the role of Economic Development Officer
- Actively market the Brandon Industrial Park and other appropriate locations to financially stable, future-focused manufacturers in growth industries.
- Actively market Brandon to telecommuters, creative freelancers and Internet-based businesses.
- Create a standard set of tax incentives for businesses operating in or moving to Brandon.
- Plan and pursue state recognition of designated growth centers adjacent to and including the Designated Downtown district.
- Encourage commercial growth within the area easily accessible to pedestrians from the central business district and served by current municipal infrastructure, including water, sewer and sidewalks.
- Explore the creation of more parking options in Brandon's central business district.
- Support appropriate growth in all the neighborhoods of Brandon including downtown Brandon, Park Village, Forest Dale, and the Brandon Industrial Park.
- Support businesses which maintain the working landscape, such as agriculture and forestry.
- Build upon Brandon's existing assets and business strengths, and encourage growth of existing local businesses.
- Encourage and support efforts to promote Brandon as a tourist destination.

- Encourage businesses to utilize vacant space in downtown Brandon and consider joint public and private investments to upgrade existing buildings.
- Target employers who pay a livable wage and sustain or enhance the quality of life in Brandon.
- Support the active involvement and efforts of residents in obtaining Designated Village Center status for Forest Dale.

NATURAL RESOURCES

Introduction

24 V.S.A. § 4382 (5) A statement of policies on the preservation of rare and irreplaceable natural areas, scenic and historic features and resources.

The Town of Brandon has an abundance and variety of valuable natural resources. The environment has played an important role in shaping Brandon's image and provides a continuing public and economic benefit to the community. The dependence on natural resources, including agriculture and forestry, are described below with policies related to their use and conservation.

Goal

Provide for the long-term protection and promote conservation of our natural resources

Policies

- Identify, protect, and preserve the natural areas.
- Protect and retain surface waters, wetlands, floodplains, fluvial erosion hazard areas and groundwater resources identified on the Natural Resources and Fluvial Erosion Hazard Area maps.
- Preserve significant woodland, agricultural, and other large blocks of undeveloped or open land, and maintain connected wildlife corridors.
- Ensure that new development, construction and rehabilitation activities are compatible with Brandon's infrastructure and streetscapes.

Background

Physiography

Topography

Brandon is composed of four major physiographic regions each influencing the town's geologic, climatic and vegetative characteristics. The south-central and western portions of the town are within the Champlain Lowland and are dominated by the Otter Creek Valley. The southwest corner of Brandon is the extreme northern reach of the Taconic Mountains. From the summit of Stiles Hill (1,301 feet), the land descends abruptly to 400 feet in one mile, demarcating the perimeter of the lacustrine plain. The lowest elevation in the town is 357 feet at the downstream extent of Otter Creek in the northwest part of town.

The most dominant physical feature is the ridgeline of the Green Mountains that forms Brandon's eastern boundary. The Birch Hill promontory and several marshy depressions in the immediate area characterize the lower slopes. Slightly eastward is Sugar Hollow, which parallels the ridgeline peaks, a narrow, steep walled ravine with slopes generally exceeding 25%. The Hollow broadens somewhat in the southeast corner where it is interspersed with small peaks and plateaus. At elevations above 900 feet, the landscape rises more sharply with severe slopes. Three peaks in Brandon exceed 1,500 feet in elevation with the maximum elevation at 2,345 feet.

The northeast corner of Brandon is characterized by the distinct Brandon Gap along Route 73 which provides the only paved access from Brandon to Goshen and Rochester. The Neshobe River also flows through this channel. The upper-central and central-northern regions of the town are of a more gentle terrain with rolling topography and several plateaus characteristic of the Champlain Lowland. With the exception of the eastern face of Lion Hill, slopes are generally moderate. Elevations range from 500 to 700 feet above sea level in this region.

Elevations

The Green Mountains, along the eastern border of Brandon, contain the town's most severe topography and highest elevations including the highest point in town -- 2345 feet. In addition to their scenic and recreational value, these areas provide a constant supply of fresh surface and groundwater. Because soils are usually shallow, the amount of surface runoff is high and restoration of vegetative cover is slow, the environment in areas above 1500 feet is very sensitive. Above 2500 feet it is considered extremely fragile. Slopes greater than 15% are found in the Green Mountains and in the Taconic Mountains in the southwestern portion of the town (Miller Hill is the northernmost point of the Taconics). Development in these areas usually results in erosion and stream siltation and can contribute to groundwater degradation because the potential for septic system failure and subsequent pollution is much greater. Development that can disturb fragile natural resources through removal of soil and vegetative cover on these slopes is incompatible with the sensitive water bearing qualities of this area. The Brandon Land Use Ordinance section on Slopes and Erosion is meant to prevent soil loss and protect natural and man made critical features such as neighboring properties, water courses, storm drainage systems, wetlands and natural areas from unstable slope / soil conditions, erosion and sedimentation resulting from construction earthwork.

Geology and Soils

The bedrock formations underlying Brandon consist of slates, phyllite and layers of marble and quartzite in the southwestern quadrant of the town. In the Champlain and Vermont valleys, carbonate rocks including sandstone, dolomitic limestone, and marble make up the bedrock, with bands of quartzite and marble in the foothills of the Green Mountains and schists and

phyllites in higher elevations. Over the bedrock, the composition and depth of surface materials varies greatly and is primarily related to glacial action and topographical features. Glacial till makes up much of the present surface cover. In the lowland area adjacent to Otter Creek, most of the original till material has been overlain with silt-clay alluvium, or lake sediment which was deposited during the post-glacial period. The maximum depth of this material is estimated at no more than 20 feet. In addition, the Brandon Delta is composed entirely of sand. Other sands and gravels were also deposited along the lower slopes of the upland region. The distribution of soils in Brandon has been mapped by the Natural Resource Conservation Service (NRCS) and the data is available to the public.

Mineral Resources

Brandon has a long history of quarrying and mining activities. Mineral resources include iron ore, marble, kaoline and lignite,. In the early 1800s, the extraction and processing of iron and marble were important Brandon industries. As many as six marble quarries operated in Brandon and produced rock with several distinct patterns. A rare paint stucco pink marble quarry once existed in this marble vein. Omya Inc. and Imerys, both mineral extraction companies, own several properties in town, and while the sites are not currently active, the companies maintain updated permits. At this time, the only actively extracted resources in Brandon are sand and gravel deposits.

The inactive Dram-Lead-Zinc Mine located south of Forest Dale contains galena, sphalerite and pyrite. Kaoline and lignite deposits are a rare occurrence not only in Vermont, but also within New England. Fossils were found in the McConnell Road mine. This area is now owned by the state.

In the future, it is recommended that those companies or contractors engaging in transportation and extraction of resources pay their fair share of costs associated with the activity.

Water Resources

Aquifer and Wellhead Protection

Brandon has established an Aquifer Protection area to protect water supplies of Fire Districts #1 and #2. Protection of the groundwater sources used for clusters of private drinking water supplies is also an important consideration. As additional aquifer(s) are identified and mapped, particular care should be given to protect them as well.

Hydrology/Watersheds

Topography, geologic, and climatological factors greatly influence the hydrologic events of watersheds and drainage basins. A watershed is a specific area of land that drains water, sediment and dissolved materials into a river system or other body of water. A drainage basin is a watershed that collects and discharges surface stream flow through one outlet or mouth. Brandon is located in the Otter Creek Watershed, a major tributary to the Lake Champlain Basin. The Lake Champlain Basin drains areas covering approximately one-third of the state and includes towns in northern Bennington County, Rutland County, Addison, Chittenden, Washington, Franklin and Grand Isle Counties, as well as parts of Quebec and New York State. The Otter Creek watershed includes Otter Creek, the Neshobe River, Jones Brook, Watershed and the Sugar Hollow Brook, which all drain the western slopes of the Green Mountains.

Surface Waters

The Otter Creek, approximately 100 miles in length, is the largest flowing body of water in the state. Approximately nine of those miles are in Brandon, entering the town from Pittsford a mile west of Route 7, flowing north - northwest until it leaves the town near Route 73 in Sudbury. After a short stretch in Sudbury, the Creek reenters Brandon and flows north into Leicester. The stream gradient is extremely low between Proctor and Middlebury, hence a low flow rate for the Otter Creek along these reaches.

The Neshobe River, a tributary of Otter Creek and the second largest stream in Brandon, meanders southwesterly from headwaters in Goshen. Entering the town near Route 73 north of the center of Forest Dale, the river passes through the Village, cascading over two falls and continuing until its confluence with the Otter Creek. Brandon has adopted a Fluvial Erosion Hazard Area bylaw and map, which regulates development adjacent to Neshobe River Corridor. <\\Server-2003\\sys\\WP51\\USERS\\Tina\\neshobe river corridor\\Neshobe River CorridorPlan final 09 12 11 with appendices.pdf> [BE SURE TO LINK PLAN HERE] <\\Server-2003\\sys\\WP51\\USERS\\Tina\\neshobe river corridor\\Brandon FEH Map.pdf> [LINK MAP HERE] <\\Server-2003\\sys\\WP51\\USERS\\Tina\\zoning\\2006 blau\\2012 blau amendments\\may 29 2006 blau with final may 7 2012 revisions.pdf> [LINK FOR BLUO]

Sugar Hollow Brook is the third largest stream in Brandon. It originates in the Green Mountain western slopes along the eastern border of the town. Flowing south, it collects water from numerous smaller tributaries before leaving Brandon and passing into Pittsford. There it joins with Furnace Brook before entering the Otter Creek in Pittsford.

There are several other smaller brooks and streams which flow intermittently throughout the year. Included among them are Arnold Brook and Bresee Mill Brook. Several small ponds exist in Brandon. Spring Pond and Burnell Pond are located in the Forest Dale area, while Jones Mill Pond is situated between McConnell Road and US Route 7. Sugar Hollow Pond is greater than 20 acres in surface area and one-half of it is located in Pittsford.

Wetlands

Wetlands are land areas that are saturated with water at least part of the year and include marshes, swamps, sloughs, fens, mud flats and bogs. Wetlands provide important wildlife habitat, but also provide other benefits such as storing storm water runoff, purifying surface and groundwater supplies, recharging aquifers, controlling erosion, and providing areas for recreation.

Brandon has extensive, significant wetlands. In recognition of the importance of wetlands, the State of Vermont has adopted Wetland Rules governing activity and development in designated wetlands. The Vermont Wetland Rules divide wetlands into two classes with Class I wetlands being the most significant. Scanlon Bog, a Class 2 wetland, is located east of Town Farm Road and should be considered for Class I designation. A portion of this natural area is owned by The Nature Conservancy, an organization dedicated to the protection of important natural resources. It is an exceptional and irreplaceable example of bog habitat (quaking bog), providing easy access for public viewing and educational research.

Wetlands are unsuitable for building construction and onsite septic systems, but they protect and enhance water quality and shoreline areas. Wetlands buffer shorelines from wave impact, slow stormwater runoff from uplands, remove phosphorus from the water during spring and summer growth periods and provide wildlife habitat. Wetlands slow and capture stormwater runoff storing it for recharge of springs and streams or the wetlands themselves at a later time. Wetlands should be included in a conservation or resource protection district and no development should be allowed in, or adjacent to, these areas.

Water Quality

Protecting the quality of the water, including both groundwater and surface waters, is an important part of the Town Plan. Water quality is protected in numerous ways including: 1) regulation of on-site sewage systems, 2) surface water setback requirements, 3) floodplain regulations, 4) vegetated buffer requirements, 5) erosion control measures on steep slopes, and 6) protection of wetlands.

Wildlife and Vegetation

A large variety of wildlife and native vegetation inhabit the land and waters in Brandon. The Vermont Fish and Wildlife Department has produced inventories and maps of the significant natural areas. The various species and their habitat include black bear production and seasonal habitat, deer wintering areas and deer yards. Rare plant and animal sites native to Vermont have been identified by the Natural Heritage program. Important wildlife corridors will be protected or conserved from encroaching development and incompatible activities, such as road expansion or development of new roads, by restricting development in and around corridors. These resources will be given high priority in considering lands for acquisition or other long-term conservation efforts.

State-owned natural areas include the Brandon Swamp Wildlife Management Area in the northwest with access from Leicester. The Brandon Town Forest, originally a portion of the Shirley Farr Trust, is on the eastern boundary. The Nature Conservancy also owns several parcels of conserved land in Brandon, including the Scanlon Bog, a significant Class 2 wetland in the northeastern part of town.

The Brandon Swamp Wildlife Management Area (WMA) is a 278-acre parcel owned by the State of Vermont and managed by the Vermont Fish & Wildlife Department. It is located in the towns of Brandon and Leicester, with the majority of the land being in Brandon. The WMA is bordered by Otter Creek to the east and the Brandon-Sudbury, Brandon-Whiting town lines to the west. Brandon Swamp WMA is a large floodplain swamp with cedar ringed by red maple-black ash hardwoods. It is one of the State's larger wetland complexes. The red maple-northern white cedar swamp is mossy and hummocky, with hidden pools. Cedar is dense in the center. In the riparian areas, there are silver maple, willow, elm, basswood and cottonwood. Former agricultural fields lay alongside Otter Creek. Approximately 1.5 miles of the Otter Creek streambank is included in this WMA. Mosquitoes are dense in season. Access across the WMA is difficult, and by foot or boat only.

The old Silver Mines site, off Birch Hill Road, is a significant natural area. Early unsuccessful mining operations in the 1800s left many caverns or pits which now support diverse fern colonies. The area represents one of the prime natural areas in the northeast for fern habitat. Some of the numerous species it sustains are rare or endangered. Owned in part by The Nature Conservancy, it is an exceptional and valuable natural area both for preservation and education/research.

Agricultural and Forest Land

Agriculture and silviculture are not only important economic activities in Vermont, but also are the foundation of a highly valued rural lifestyle and a significant factor in the shaping of the landscape. There are 3,812.3 acres of agriculture and forest land, approximately 15% of the total land area, in the Use Value Assessment Program²⁷ in Brandon.

Land capable of supporting agricultural uses requires prime agricultural soils as well as moderate slopes, adequate parcel size, and access. There are few farms left in Brandon. There are a total of 1,014 acres in Brandon, including several significant parcels at the junction of McConnell Road and Route 7, on which the Vermont Land Trust holds conservation easements and which are used for various agricultural purposes. Brandon has several agri-tourism businesses which feature animals as diverse as goats and alpacas.

²⁷ Source: Brandon Listers' Office. The Use Value Assessment Program provides an incentive to owners to keep their parcels as woodlots or agricultural land in the form of a lower tax rate based on use value, not full market value.

Like agriculture, forestry is an important activity in the state and region. Lands capable of supporting forests are critical to the support of silviculture as well as providing wildlife habitat and places for recreation. Brandon has a considerable amount of preserved forestlands.

The southern part of the Green Mountain National Forest is located in Brandon along Leicester Hollow Brook where it joins the Neshobe River. A portion of the forest north of Forest Dale was designated a Management Area in the 1986 Land and Resource Management Plan for the Green Mountain National Forest.

The Brandon Town Forest is located along Brandon's eastern border with Goshen and Chittenden, and contains about 80 acres. The forest provides protected wildlife habitat, dispersed and relatively undeveloped recreational opportunities (such as hiking and hunting), and also serves to protect the watershed. A management plan was written for the forest which promotes this valuable resource's long-term sustainability and productivity.

The High Pond Nature Reserve, close to the western border with Sudbury, also contains protected woodlands and is now conserved by The Nature Conservancy.

Scenic and Aesthetic Resources

The Brandon "streetscape" is a combination of natural and human-made scenic resources and a significant source of community identity. Scenic resources, including farms, open pastures, woodlands and streams, as well as historic homes, barns, inns and towering church spires, have aesthetic, historical and economic value to the community. A number of elements, such as tree-lined streets, green space and parks, sidewalks, flower gardens, and park benches all add to the quality of life in Brandon.

Conservation Areas

Conservation areas within Brandon are those lands that contain natural features or natural limitations that reduce the ability of the land to support extensive development.

Because of the severity of their limitations or natural significance, some conservation areas are more sensitive to disturbance than others. The areas identified as being most severely limited are: Scanlon Bog, Smalley Swamp, Arnold Brook Swamp, Long Swamp, Brandon Swamp, the Otter Creek and Neshobe River floodways, habitat of flora or fauna which are designated as threatened or endangered, and all lands above 1500 feet in elevation. It is recommended that these areas remain as open land. Allowable uses should be: agriculture (with Acceptable Agricultural Practices at a minimum, and preferably with Best Management Practices), forestry (with Acceptable Management Practices), recreation uses which do not require the use of pesticides or herbicides, and non-structural public uses. New residential and commercial / industrial uses should be strongly discouraged.

Conservation areas outside of the above have constraints on development such as steep slopes, shallow soils, wetlands, prime agricultural soils and floodplain outside the floodway. Some are constrained by distance from good roads or other poor access issues. The town's policy is to orient growth toward areas that can best accommodate development (for example, with good access and few if any environmental limitations), and therefore these areas are envisioned to retain their open character. Environmentally sensitive, clustered development may be reviewed for conditional approval based upon its ability to incorporate the conservation design concepts noted below.

Action steps

Physiography

- Development should be prohibited in areas where the slopes exceed 20% and should be avoided in areas where the slopes are greater than 15%.
- Elevations above 1,500 feet should be protected from intensive uses and development.
- Regulations intended to protect the scenic value of visible mountaintops and ridgelines should be implemented.

Geology and Soils

- Unique geologic areas should be protected from uses that would destroy their resource or recreational value.
- Existing sand and gravel operations should be permitted to continue operation subject to appropriate conditions relative to surrounding residential uses, and to mitigation of impacts on wetlands, aquifers, streams and ponds. When extraction operations cease, the land should be properly reclaimed so that, at a minimum, it may serve as passive open space.
- Prime agricultural soils should be given high priority for protection under Act 250 considerations.
- Companies or contractors engaging in transportation and extraction of resources should pay their fair share of costs associated with the activity.

Water Resources

- Protect surface waters and ground water from development and uses that would reduce water quality.
- Wetland areas shall be retained in their natural state for the provision of wildlife habitats, retention areas for surface runoff, recreation, and resource value.

- Shorelines and streambanks, including buffer strips, shall be protected from uses, reclamation and development which would cause erosion, prohibit public access, or reduce scenic qualities.
- Work to secure and maintain public access to the Otter Creek and Neshobe River within the town boundaries for recreational uses such as canoeing, kayaking, and fishing.
- Encourage volunteers to keep these waterways clear for use and to prevent flood hazards. Take appropriate actions to preserve water quality.
- All wetlands should be protected to the maximum extent (beyond state and federal regulations).

Wildlife and Vegetation

- Wildlife habitats such as wetlands, deer yards, and surface water, shall be protected and buffered from uses and development that would reduce their vital function.
- Identify and protect a functional, interconnected system of habitats. Minimize the impacts of development on the system of interconnected habitats as well as on individual areas of biological significance.
- Continue the implementation of the Brandon Town Forest Management Plan..
- Encourage clustering of development in order to allow viable amounts and patterns of undisturbed and/or open land.

Agricultural and Forest Resources

- Encourage proper woodland management, reduce fragmentation of large forest blocks, and encourage connection/linkages of woodland areas.
- Preserve farm and forest lands and maintain the working landscape through conservation, easements, tax incentives, and land acquisition.
- Discourage development within significant agricultural and forested areas. Development of lands with resource value for woodland or agriculture should occur in patterns and densities that will not substantially reduce the productivity of the land. Clustering or other innovative techniques are strongly encouraged to reduce the impacts of development.
- Require forest management plan development and implementation where significant land conversion is proposed.
- Agricultural land should remain open for future agricultural operations.

Scenic and Aesthetic Resources

- Encourage development that complements or enhances the scenic quality of the Brandon landscape.

- Scenic and aesthetic resources should be protected and maintained.
- Evaluate the location of utility lines and encourage burying of lines in public rights-of-way.
- Discourage light pollution from exterior lighting of streets, parking and signage by encouraging energy efficient, shielded non-glare lights.
- Update the inventory of the trees that line the streets of the villages, including their type, size and health. Assist and encourage the maintenance of these trees and develop a program to fund the replacement of those that are diseased and/or dying.
- Discourage removal of healthy mature trees on construction, public works, highway or redevelopment sites.

FLOOD RESILIENCE

24 V.S.A. §4382 (12)(A): A flood resilience plan that:

(i) identifies flood hazard and fluvial erosion hazard areas, based on river corridor maps provided by the Secretary of Natural Resources pursuant to 10 V.S.A. § 1428(a) or maps recommended by the Secretary, and designates those areas to be protected, including floodplains, river corridors, land adjacent to streams, wetlands, and upland forests, to reduce the risk of flood damage to infrastructure and improved property; and

(ii) recommends policies and strategies to protect the areas identified and designated under subdivision (12)(A)(i) of this subsection and to mitigate risks to public safety, critical infrastructure, historic structures, and municipal investments.

(B) A flood resilience plan may reference an existing local hazard mitigation plan approved under 44 C.F.R. § 201.6.

Background

Tropical Storm Irene in 2011 and major flooding events both before and after prompted the Legislature, Regional Planning Commission, and others to re-examine Vermont's relationship with water and how development can cause, increase, or decrease the effects of flooding and fluvial (river) erosion. General information regarding Brandon's watershed topography and response to flooding threats is contained in the Natural Resources section of this Plan, in addition to the following.

Floodplains

A floodplain is the flat land adjacent to rivers and streams that is periodically inundated to varying depths during periods of high water. Small floods tend to be more frequent than large ones. The 100-year flood frequency is used as the standard for delineating flood hazard areas by the Federal Insurance Administration. The 100 year flood will have a one percent chance of being equaled or exceeded in any given year. The 1927 flood is estimated to be a 100-year frequency and was used as a standard for mapping Rutland region floodplains. Extensive floodplains exist in Brandon in the central and western portion of the town and have been mapped by the federal government.

Response

Flood Hazard Areas are identified on Natural Resources Map 1 of 2.

The town also has adopted an All-Hazard Mitigation Plan (approved by FEMA in October 2012) which identifies all hazards, including specifically flood hazard areas and fluvial erosion hazard areas and includes recommended policies and plans, programs, projects and activities, including

mitigation and preparedness actions, and strategies to protect these areas. <\\Server-2003\\sys\\WP51\\USERS\\Tina\\brandon hazard mitigation plan>. [be sure to link to Brandon's hazard mitigation plan.] The town has adopted comprehensive floodplain management and fluvial erosion hazard policies.

Comment [A34]: Look at floods/fluvial erosion section of hazard mitigation plan to make sure the plan actually does this.

The most cost-effective way for the Town of Brandon to mitigate flood hazards is avoidance: limiting building and other investments in river corridors. In addition to preventing future flood losses to structures built in hazardous areas, this approach avoids constraining a river, allowing the stream or river, over time, to become more stable. Statute 24 V.S.A. §4424 specifically authorizes towns to adopt zoning for shorelines, floodplains, and other hazardous areas, including fluvial erosion zones.

Goal

Mitigate and eliminate risks to public safety, critical infrastructure, historic structures, and municipal investments posed by flooding and fluvial erosion.

Policies

- Minimize development in river corridors.
- Protect and restore river corridors, floodplains, wetlands, and upland forested areas that attenuate and moderate flooding and fluvial erosion.
- Stormwater retention practices should be required of any new development that creates more than an additional one-quarter acre of impervious surface.
- New development in floodplains and river corridors (fluvial erosion hazard areas) identified on the Natural Resource and Fluvial Erosion Hazard Area Maps shall not exacerbate flooding and fluvial erosion, and is to be avoided.

Comment [A35]: This sounds more like a goal/objective- what specific policies and strategies are recommended to protect and restore these areas?

Action steps

- Maintain, update and implement the Local Emergency Operations Plan that encourages flood emergency preparedness, including Incident Command System trainings.
- Continue to comply with the National Flood Insurance Program and work to achieve Community Rating System classification.
- Maintain, update and implement policies and recommendations in the Town of Brandon All-Hazard Mitigation Plan specific to flooding and fluvial erosion.

TRANSPORTATION

24 V.S.A. § 4382(3): A transportation plan, consisting of a map and statement of present and prospective transportation and circulation facilities showing existing and proposed highways and streets by type and character of improvement, and where pertinent, parking facilities, transit routes, terminals, bicycle paths and trails, scenic roads, airports, railroads, and port facilities, and other similar facilities or uses, with indications of priority of need;

Introduction

A good transportation system, facilitating accessibility and the movement of people and goods within and through Brandon, contributes to a high quality of life. The transportation plan must be considered in terms of its environmental and social impacts and in conjunction with other elements of this Town Plan. Transportation is vital to economic development, as well as being a significant user of energy. Any planning associated with transportation should take into consideration and make efforts to facilitate economic development and minimize energy consumption.

Goal

To support provision of an accessible, cost-effective, balanced transportation system that meets the needs of Brandon residents and businesses while providing through movement of people and goods.

Policies

- Plan for and encourage the development of transportation facilities designed for multiple modes of transportation.
- Improve traffic flow and parking capacity in Brandon while balancing other objectives such as maintaining downtown's historic character and vitality.
- Maintain and improve conditions on existing transportation infrastructure.

Background

The evolution of Brandon's transportation system mirrors that of many towns in Vermont. Trails created by wildlife, Native Americans, and early settlers became roadways. Railroad service blossomed and faded, and 20th century society became heavily dependent on automobile and truck transportation.

Transportation has become the highest area of energy use by most Vermonters. In order to lessen the adverse impact of car and truck use, more choice and diversity in transportation

Comment [A36]: ????

modes is necessary. The highway and bridge system upon which society depends needs to be maintained.

Highways and Roads

Highways constitute the most significant component of Brandon's existing transportation system, providing paths for public transportation and bicycles and pedestrians as well as automobiles and trucks. They are identified by their functional classification (major arterial, minor arterial, collector, local street, etc. (See Technical Appendix G). US Route 7, a principal arterial, is the most heavily traveled road in Brandon. It serves the western side of the State for long distance through-traffic as well as local trips. Roads such as Arnold District Road and Country Club Road are considered to be local streets, providing access to individual parcels of land, although they also function as secondary through roads. Town highways are, by State legislation, also categorized by their administrative class (See Technical Appendix G). There are 70.7 miles of roads in the Town of Brandon, 12.9 miles of which are State highways. The function and administrative classification of roads should be a consideration when planning for growth.

Highway Traffic Volumes

The number of vehicles using a highway affects many decisions about the highway itself as well as land use planning for adjacent land. The most common way to describe traffic volumes is the Average Annual Daily Traffic or AADT. The AADT represents the total traffic volume passing a point of a highway for one year divided by the number of days in the year (total both directions). In Brandon, the highest volume is on US Route 7, especially in the village area (approximately 10,000+). Lower volumes occur on VT 73 (1,300 – 4,000 vehicles). Town highways, such as Arnold District Road and McConnell Road, show much lower volumes, close to 1,000 vehicles or less. In general, none of the volumes, with the exception of those on US Route 7 in the village, appear excessively high and are below design capacity.

Infrastructure Conditions

In general, paved town highways in Brandon are adequately maintained and the town maintains gravel roads to a satisfactory standard. However, several roads in Brandon are in need of better maintenance. Overweight vehicle traffic, both on Route 7 and on town roads, is causing premature deterioration of road surfaces. Whenever gravel roads begin to carry heavy traffic, in the AADT range of 400 - 1,000 vehicles, they should be considered for paving. This should be done depending upon other factors, such as availability of funds, and provision of an adequate base and drainage.

Comment [A37]: Should we put in something about taking tire chains off town trucks? Also, relocation of the Town Garage might lessen the impact on Brandon-owned roads.

The Town has a computerized, graphic information-based inventory of culverts. It is important for capital planning that this be maintained and kept up-to-date.

High Accident Locations (HAL)

Another way to identify deficiencies in the highway network is to examine accident records to ascertain locations where there appear to be more accidents than would normally be expected. US Route 7 in the village has been identified as a primary site, in addition to less frequent and severe locations on McConnell Road and Carver Street. Geometric features at those locations are often deficient and need to be improved. The configuration of US Route 7, with its sharp turns, vertical curves and limited sight distances, all contribute to accident rates.

Pittsford-Brandon US 7 Upgrade (Project ID - NH 019-3(49))

The goal of this project is to provide an attractive, safe, and efficient transportation corridor with improved pedestrian and vehicular safety and enhanced mobility along US Route 7 through the Towns of Pittsford and Brandon. This project includes shoulder widening and roadway reconstruction, construction of truck climbing lanes and reconstruction of intersections, as well as drainage improvements, landscaping, utilities, relocations, and safety improvements. Modifications in downtown Brandon involve a substantial rearrangement of the road as it passes around Central Park. The changes are intended to improve the flow of through-traffic while still providing for local parking and pedestrian use in front of Park Street businesses and the Brandon Inn. The town strongly supports this project.

Bridges

The ownership of bridges determines responsibility for their maintenance. Bridges with spans of 20 feet or more are generally eligible for federal support, while bridges (or culverts) with spans greater than six feet but less than 20 feet are generally eligible for state funding. Brandon has a total of 22 bridges – eleven over 20 feet long and eleven less than 20 feet.

The condition of local and state bridges is evaluated regularly by the Vermont Agency of Transportation. Using a system developed by the federal government, bridges are given a rating of between 0 and 100. Bridges with scores of less than 70 are considered eligible for federal funding. Brandon currently has eight bridges below the rating of 70. New project candidates are suggested to the Agency of Transportation by the Regional Planning Commission during their annual prioritization process and these bridges should be on that list.

Parking

In the downtown area, parking is a recognized problem that must be addressed. The angled parking spaces that currently exist, together with the narrowness of the road and the volume of traffic, create dangerous levels of conflicting movements. Provisions should be made for additional off-street parking. These provisions will need to acknowledge the importance of the

town's aesthetics, historic character, economic development, and issues relating to the public's health and safety. Municipal parking added behind the Center Street stores in recent years has increased the number of available spaces.

Park and Ride

Brandon's first municipal Park-and-Ride was established at Estabrook Field in 2008. This area serves as the pick up/drop off location for both commuter buses

Development of New Roads

New roads serving residential and commercial development should be planned and constructed in a fashion that adheres to state and town land use ordinances as well as the town's road standards. Access, circulation and design review must be carried out according to town standards in order to protect the interests of the public and the town.

No new town highways are expected to be adopted. In addition, the current road infrastructure adequately serves Brandon's residential and commercial needs. No new construction is anticipated.

Access Management

Almost all roads serve two important functions: the provision of access to adjacent land, and as travel-ways for through-traffic going past the land adjacent to the road. The two functions conflict because the turning movements necessary to access adjacent land impede through-traffic, and through-traffic reduces the ability of local traffic to get on and off the roadway.

The goal of access management is to achieve a safe and efficient flow of traffic along a roadway while preserving access to abutting properties. When carried out properly, access management balances mobility and access. In Vermont, access design standards and regulations are ideally a cooperative effort between local zoning and planning officials and the state's Agency of Transportation for State roads. Control and regulation of the spacing and design of driveways and streets, medians and median openings, and traffic signals are the primary means by which access management is carried out. (See Technical Appendix G for more details)

In Brandon, the need for access management is most clearly visible along US Route 7 as it carries the heaviest volumes of traffic. This is particularly important in the vicinity of intersections such as McConnell Road where a variety of uses exist, and therefore curb cuts have been developed. Consolidation of access points is needed and where appropriate, measures should also be designed to improve pedestrian access.

Non-Vehicular Transportation Modes

Although highways dominate the local transportation network, other modes of transportation are increasingly important in providing access to the people of Brandon.

Air

Rutland Southern Vermont Regional Airport is located south of Rutland in North Clarendon, 23 miles south of Brandon. It is one of the largest state-owned airports in Vermont and the only state-owned airport with scheduled passenger service. The airport has two runways (1-19 and 13-31) and offers three daily flights to Boston. There are also major commercial passenger and cargo services available at Burlington International Airport in Vermont, Albany International Airport in New York, and Manchester Airport in New Hampshire.

Bicycle and Pedestrian

Bicycle and pedestrian travel are critical elements in creating a balanced and sustainable transportation system. Health, safety and energy conservation are just a few of the benefits of these alternative means of transportation. The schools should participate in the Safe Routes to School Program which educates and encourages walking and biking to school.

As of 2008 there were no designated bike paths or bike lanes in Brandon. At one time bike paths were proposed to Otter Valley Union High School and Neshobe School but they were never constructed due to costs. All significant future development should require bike lanes within the development which connect to existing transportation infrastructure.

The most heavily used pedestrian area is downtown Brandon. Safe pedestrian routes are needed between neighborhoods, commercial and industrial areas, and community centers. Existing sidewalks should be connected and upgraded and additional sidewalks should be promoted. Visibility at all crosswalks should be maintained. All significant future development should require sidewalks and appropriate crosswalks with curb cuts for handicap accessibility. This type of infrastructure should be created as a requirement of new planned residential developments.

Public Transportation

Public and private transit services are an important component of the transportation system. Not only does public transportation decrease the number of vehicles on highways, it provides an essential service to the elderly, disabled and handicapped. The Marble Valley Regional Transit District (MVRTD or, "The Bus") in the Rutland region in conjunction with Addison County Transit from Middlebury currently provides fixed-route service to Brandon from the north and south. The Town directly participates with MVRTD and human service agencies in the public transportation program, assuring that bus and paratransit service is provided for the elderly, disabled, and all residents. Efforts to coordinate and expand transit service, especially to citizens who are dependent on public transit, should continue to be supported.

Rail

An active rail line, operated by the Vermont Railway, runs parallel with US Route 7 through Brandon on the west side. Currently only freight is regularly carried over the line. A proposal

has been made for a spur from the current railway to Middlebury which would carry freight and ultimately decrease the number of trucks on US Route 7.

Recognizing that goods moved and services provided by trucks are important contributions to the public's welfare, Brandon suffers adversely from the noise, dust, vibration and congestion created by truck traffic. The Middlebury Rail Spur would increase the carriage of freight by rail., necessarily decreasing through-town truck traffic. The Town supports construction of the spur.

The Town of Brandon strongly supports the construction of The Middlebury Spur as well as development of a passenger service and a rail freight-truck transfer facility.

Impact of Regional Transportation Element

The transportation element of the Rutland Regional Plan influences and is influenced by local transportation decisions. In addition, State funding and projects within the town of Brandon are prioritized on regional and statewide levels. The Town's continued participation in development of the regional transportation plan and priorities is very important.

Action steps

- Support the Middlebury Rail Spur which allows for increased use of rail for freight transportation. Appoint a representative to the committee for the rail spur.
- Explore options to increase the number of parking spaces in the central business district.
- Encourage use of Brandon's municipal Park-and-Ride lot. Explore new P&R sites and expand existing sites.
- Require bike paths or lanes in all significant new construction
- Require sidewalks in all significant new construction.
- Prioritize maintenance of roads and bridges throughout Brandon.
- Maintain current inventory of infrastructure.
- Designate and maintain safe crosswalks of US Route 7 at all appropriate locations.
- Enforce speed and weight limits on all roads
- Coordinate planning and development with regard to the link between land use and transportation.
- Support the upgrade of US Route 7.
- New development along class 4 highways and unmaintained roadways should be discouraged unless there is a roadway improvement and maintenance plan with funding for the plan in place.
- Support regional efforts to provide public transportation to all, for example, with bus routes.

- Implement an eco-friendly shuttle service between Park Village, Downtown, and Forest Dale.

FUTURE LAND USE

24 V.S.A. § 4382(2): A land use plan:

(A) consisting of a map and statement of present and prospective land uses, indicating those areas proposed for forests, recreation, agriculture (using the agricultural lands identification process established in 6 V.S.A. § 8), residence, commerce, industry, public, and semi-public uses and open spaces reserved for flood plain, wetland protection, or other conservation purposes;

(B) setting forth the present and prospective location, amount, intensity, and character of such land uses and the appropriate timing or sequence of land development activities in relation to the provision of necessary community facilities and service; and

(C) identifying those areas, if any, proposed for designation under chapter 76A of this title, together with, for each area proposed for designation, an explanation of how the designation would further the plan's goals and the goals of section 4302 of this title, and how the area meets the requirements for the type of designation to be sought;

Introduction

The Town of Brandon must balance preservation of its community and character and conservation of its resources with support of opportunities for economic growth in order to sustain the town's citizens and services. This Plan provides guidance for future growth and development. Brandon encourages planned growth and concentrated development in those areas of the town which provide for higher density and which can develop the necessary infrastructure to more readily support development than other sections of town. This policy is consistent with the direction provided in Vermont's planning laws (24 V.S.A. Chapter 117). Future growth should be concentrated in existing areas of development; as well as being oriented toward infill areas, making maximum use of existing infrastructure.

Goal

To encourage strategic growth and economic development while protecting existing natural, scenic, and historical resources.

Policies

- Recognize the town's cultural resources and historic settlement pattern as a significant, non-renewable resource that creates a sense of place and community well being.
- Maintain a land use pattern of relatively densely settled villages and clustered development radiating from the town center which may be efficiently served by community facilities and services. Residential development should be clustered using smaller lots for development in order to maintain a range of other open space uses.

- Protect the integrity of the community and existing neighborhoods by encouraging the preservation and renovation of existing housing stock.
- Preserve and revitalize existing historic streetscapes.
- Identify, protect, and preserve the valuable natural areas within Brandon. Support and ensure the long-term protection of natural resources.
- Recognize the links between land use, energy consumption, and transportation and coordinate their planning and development.

Existing Development

The Town of Brandon contains a distinct, historic downtown or ‘village’ area that straddles the Neshobe River. There are four greens / parks, four churches, municipal buildings, a variety of stores, offices, restaurants and several inns. Another long-standing cluster of development exists northeast of downtown in Forest Dale. There, a few businesses, the town's elementary school, two churches, the Senior Citizen’s Center, a golf course and two general stores are interspersed amidst residential development, much of which is historic. Just northwest of the downtown is Park Village, a campus of mixed business and residential uses. It is adjacent to the Industrial Park. These clusters of development are surrounded by generally open, rural and forested land with residential and non-residential uses.

Brandon's current land use districts include Aquifer, Central Business, High Density Multi-Use, Neighborhood Residential, and Rural Development. For zoning purposes, the boundaries of each District are indicated on the official Land Use District Map posted in the Brandon Town Offices. Full explanations and requirements of each district are outlined in the Brandon Land Use Ordinance.

The Aquifer District encompasses those lands that provide the water sources and storage for wells maintained by municipal fire districts.

The Central Business District serves as the commercial center of the Town by providing a wide variety of small shops and commercial uses within convenient walking distance. This historic core of the village, along US Route 7, is an area labeled the Central Business District. It is recommended that the current mix of retail shops, public facilities and institutions, (for example, town offices and churches), offices and some residential uses on upper levels, be continued and supported. Appropriate reuse of vacant or underused existing structures is the preferred means by which new growth should be accommodated and is strongly encouraged. New infill development should respect the historic character and function of the area. Efforts to enhance the pedestrian-friendly character are encouraged. The existing density should be maintained or slightly increased in order to support the vitality of the Central Business District.

Neighborhood Residential Districts are those set aside primarily for residential and other uses that are compatible with and which contribute to the viability of such neighborhoods. They surround the village core, generally along the roads which radiate from the center of town such

as Park, Union, Pearl, Seminary, Carver and Prospect Streets,. They are served by public water and sewer and have good access for emergency services. Non-residential uses such as corner stores and small offices that can rely primarily on foot traffic rather than generating new traffic and parking needs may be allowed subject to public review. Infill development and non-residential uses should support the residential character of these areas. When constraints allow, existing densities of up to four dwelling units per acre should be replicated on any vacant or underused land.

High Density Multi-Use Districts (HDMU) are designated for concentrated mixed use development. Uses that require a large amount of space or those that could compromise the viability of allowed development are either prohibited or subject to the conditional use process. HDMUs are areas that are served by public water and sewer and also have direct access to arterial or major collector streets. They are primarily located outside but connected to the village, along Grove Street and Forest Dale Road/VT 73. There are six smaller areas in the village: off Union Street in the vicinity of the railroad tracks, on the west side of Carver Street just east of the industrial area, in the general vicinity of the Grand Union supermarket, along Conant Square just west of Prospect Street and between Seminary Street and the river northeast of the Town Hall. In these areas, a variety of residential, commercial, agricultural, recreational and public uses are allowed. Design measures to assure peaceful coexistence between differing uses should be employed; these should include landscaping, access consolidation, building design details, noise and lighting management and other methods to promote compatibility. Densities of up to four units per acre, similar to the Neighborhood Residential areas, should be maintained.

Rural Development Districts include those lands that have been determined to be unsuitable for extensive development because of their ecological or topographical characteristics, the unavailability or inadequacy of public infrastructure, or reduced growth planning considerations. The minimum number of acres per dwelling unit in the Rural Development is two.

The Brandon Planning Commission has determined a need to replace Brandon's use-based zoning, which is based on historical model legislation that was ill-fitted to Vermont generally and Brandon in particular. The current zoning ordinance, written in 1996, is a bloated 83 page tome that citizens broadly agree is in dire need of rethinking and rewriting.

Therefore, the Brandon Planning Commission shall adopt a Brandon-Based Code that meets state requirements for zoning bylaws while reflecting Brandon's unique architecture, settlement patterns, and values – that is, its "character."

Future Development

To be consistent with the goals outlined in this Plan, future growth shall be guided into already developed areas as much as possible. Brandon has a Downtown Designation from the State of

Vermont. The designation is up for renewal in 2017 and it is the intent of the town to actively seek and maintain this designation. Forest Dale residents are seeking a Village Designation and Park Village is seeking a Growth Center Designation from the state under 24 V.S.A. § 4404. Village and Growth Centers Designations are a means for building on such existing patterns of development. Potential sites for growth center consideration include Park Village, Forest Dale and the area around the rail on Union Street. As defined by the Vermont Division of Housing and Community Affairs, "A growth center is a compact area planned for concentrated, mixed-use development.... The growth center will likely include lands outside the core. ... There will almost certainly be residential neighborhoods, there may be commercial or industrial areas.... The goals of growth center planning will include integrating existing and future uses within the growth center and increasing connections between currently disconnected areas."²⁸

Comment [A38]: Check this language

Land that contains natural constraints on development (steep slopes, floodplain, aquifers, etc.) shall not be developed unless adverse impacts can be adequately prevented or mitigated. In developed areas, the appropriate reuse of existing buildings is the preferred method of accommodating new uses. Redevelopment may be appropriate where existing structures are unsound or unsuitable. If new construction is proposed, it shall be of a location, scale, site plan, and design that complements and enhances existing, conforming development. The Future Land Use Map shall be a blueprint of future growth in Brandon (see Figure 2).

Action steps

- Explore State Growth Center designation for the Park Village area as well as the area around the Union Street rail.
- Redefine permissible land uses in the McConnell Road area in order to prevent encroaching sprawl.
- Require future development in the McConnell Road area to include the cost (borne by the developer) of infrastructure and lights.
- Hold an open forum focusing on the vision for future development of Forest Dale.
- Actively investigate the potential for development of another grocery store in Brandon, possibly as part of a growth center plan.
- Examine the potential for light commercial development in Park Village.
- Encourage greater infill development along the Park Village utility corridors.
- Consider incentives to promote reuse of existing buildings, especially in the Central Business District and McConnell Road areas, through land use regulation, permitting, and tax incentives such as tax stabilization.
- Continue efforts to revitalize downtown Brandon.
- Maintain improvements to the visual appearance of downtown which accommodate both the historical and modern needs of the village area.
- Promote conservation design by organizing development outside the villages around the characteristics of the landscape.

²⁸ Brandon Town Report FY06-07

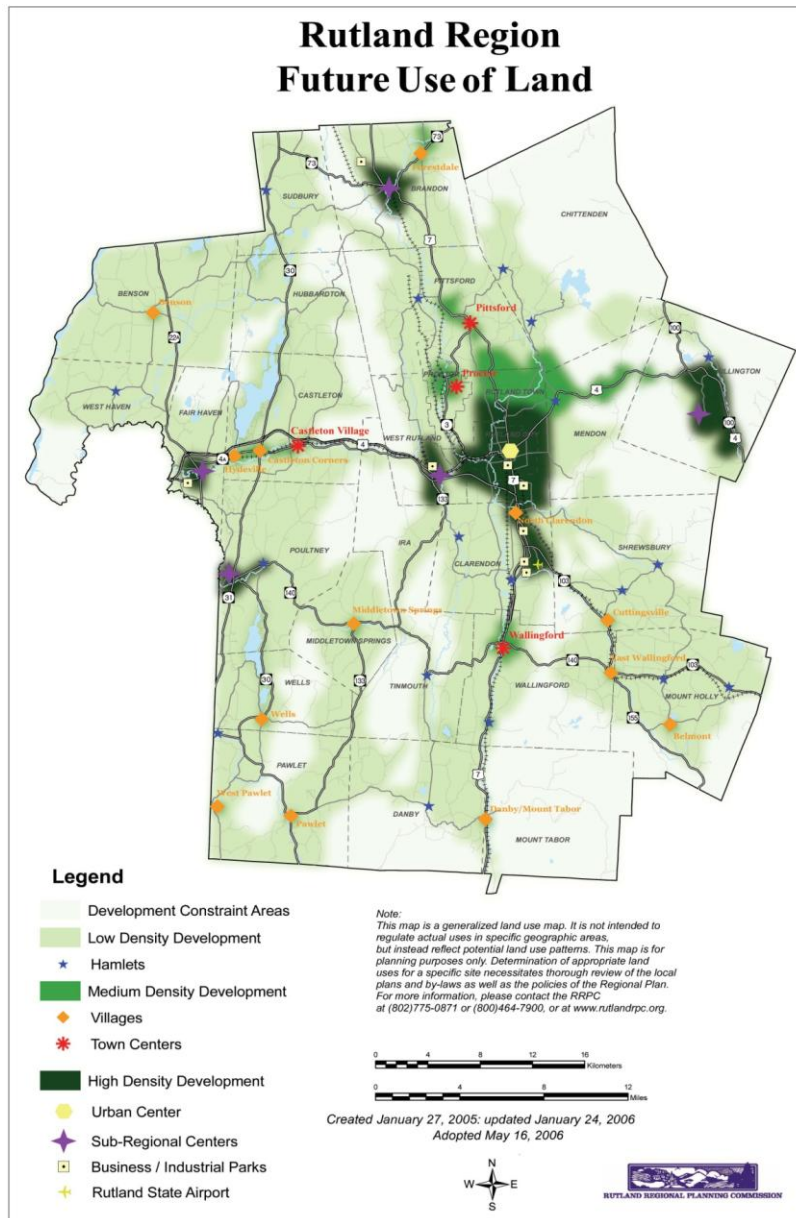


Figure 2. Future Land Use map adopted in the Rutland Regional Plan (2006)

Consistency with Adjacent Town Plans

24 V.S.A. § 4382 (8): A statement indicating how the plan relates to development trends and plans for adjacent municipalities, areas and the region developed under this title;

Brandon's future land use plan is consistent with plans developed by adjacent communities in the following ways:

To the west, the Town of Sudbury's land use plan acknowledges the presence of existing environmental conditions (i.e. extensive floodplain and wetlands in the vicinity of the Brandon/Sudbury boundary) and therefore also recommends low density residential and/or conservation uses.

To the North, the plan for the Town of Leicester (in Addison County) is similar to Brandon's in that it generally recommends conservation lands in the far eastern and western portions of the town and low density residential and/or agricultural uses in the central part. Leicester's town plan map also designates both sides of US Route 7 as planned for residential, agricultural and commercial uses.

The Town of Goshen, to the northeast (in Addison County), plans forest and conservation uses in the area adjacent to Brandon.

Chittenden, to the southeast, does not have a town plan.

To the south, the Town of Pittsford recommends conservation uses in the western and eastern portions of the town and rural uses in the central portion.

CONCLUSION AND IMPLEMENTATION

A number of themes emerge when considering the various action steps made in this Plan. In several instances, action steps were made requiring infrastructure (sidewalks, traffic lights, bike paths) as a condition of new construction. Adaptive reuse of existing buildings is another theme that appeared in several functional areas (for example, as a historic preservation strategy, as an economic development strategy, and as a future land use recommendation.) Protection of natural assets (aquifers, forest management, wildlife habitats, and conservation areas) is a priority in terms of the Town's cultural, recreation and natural resources. Clustered housing development was yet another common theme in several functional areas. In terms of housing and future land use, for example, clustered housing development is an efficient way to protect open spaces, increase densities in existing developed areas and promote the adaptation and reuse of existing homes and structures.

Finally, greater emphasis on the connection between land use and transportation occurred as a priority in several areas. Cited in the energy, economic development, transportation and future land use sections, stronger linkages between land use and transportation will facilitate greater density and energy efficiency in developed areas, while protecting conservation lands and natural assets. These reoccurring themes, combined with the action steps made throughout the Plan, are a template for the future.

Implementation of the Plan will require both public and private sector involvement and cooperation. Analysis of existing ordinances for their consistency with the goals and Policies in this Plan is the next step, followed by modification of any regulation that may need adjustment. The Select Board may choose to develop a workplan outlining the time frame during which specific actions will be carried out..

A well-defined work plan will operationalize the recommendations of this Town Plan. Public participation will ensure success.

INDEX

TABLE OF CONTENTS.....	2
OVERVIEW.....	6
PLANNING AND PROPERTY RIGHTS.....	8
VISION.....	10
GOALS, POLICIES, ACTION STEPS.....	10
COMMUNITY PROFILE.....	12
Physical Characteristics and Location.....	12
Brief History of Brandon.....	12
Government.....	13
Socioeconomic Information.....	13
Population.....	13
Age and Social Characteristics.....	14
Households.....	14
Income and Employment.....	15
PUBLIC FACILITIES AND SERVICES.....	16
Introduction.....	16
Goals.....	16
Policies.....	16
Utilities Infrastructure.....	17
Water Supply.....	17
Sewer.....	18
Municipal Services.....	19
Town Offices.....	19
Fire Protection.....	19
Police Protection.....	20
Solid Waste Disposal.....	20
Community Facilities.....	22
Brandon Free Public Library.....	22
Brandon Area Rescue Squad (BARS).....	22
Brandon Senior Citizens, Inc.	22
Brandon-Leicester-Salisbury-Goshen Insect Control District.....	23
Educational Facilities Plan.....	23
ENERGY.....	27
Introduction.....	27
Goals.....	27
Policies.....	27

Action Steps	28
Analysis	28
Statewide Trends and Data.....	28
Energy resources.....	29
Needs	30
HOUSING	33
Introduction	33
Goals	33
Policies	33
• Encourage a housing balance with an appropriate mix to meet all market needs.	33
Existing Conditions.....	34
Housing Market.....	35
Affordable Housing	35
Rental Housing	36
Recommendations	36
CHILDCARE	38
Introduction	38
Background / Analysis	38
Goal	38
Policies	39
Action steps.....	39
RECREATION.....	40
Introduction	40
Goal	40
Policies	40
Recreation Background.....	40
Brandon’s Recreation Program	41
Recreation Infrastructure	41
HISTORIC AND CULTURAL RESOURCES.....	43
Introduction	43
Goals	44
Policies	44
Background	45
Action steps.....	47
ECONOMIC DEVELOPMENT	49
Introduction	49
Goal	49
Policies	49

Background	51
Economic Characteristics	51
Businesses	51
Workforce	51
Economic Development Activities	52
Action steps.....	53
NATURAL RESOURCES.....	55
Introduction	55
Goal	55
Policies	55
Background	55
Physiography.....	55
Geology and Soils	56
Water Resources	57
Aquifer and Wellhead Protection	57
Hydrology/Watersheds	57
Surface Waters.....	58
Wetlands	59
Water Quality.....	59
Wildlife and Vegetation	59
Agricultural and Forest Land	60
Scenic and Aesthetic Resources.....	61
Conservation Areas	61
Action steps.....	62
FLOOD RESILIENCE	65
Background	65
Floodplains	65
Response	65
Goal	66
Policies	66
Action steps.....	66
TRANSPORTATION	67
Introduction	67
Goal	67
Policies	67
Background	67
Highways and Roads	68
Highway Traffic Volumes	68

Infrastructure Conditions.....	68
High Accident Locations (HAL)	69
Pittsford-Brandon US 7 Upgrade (Project ID - NH 019-3(49))	69
FUTURE LAND USE	74
CONCLUSION AND IMPLEMENTATION	80
INDEX	81