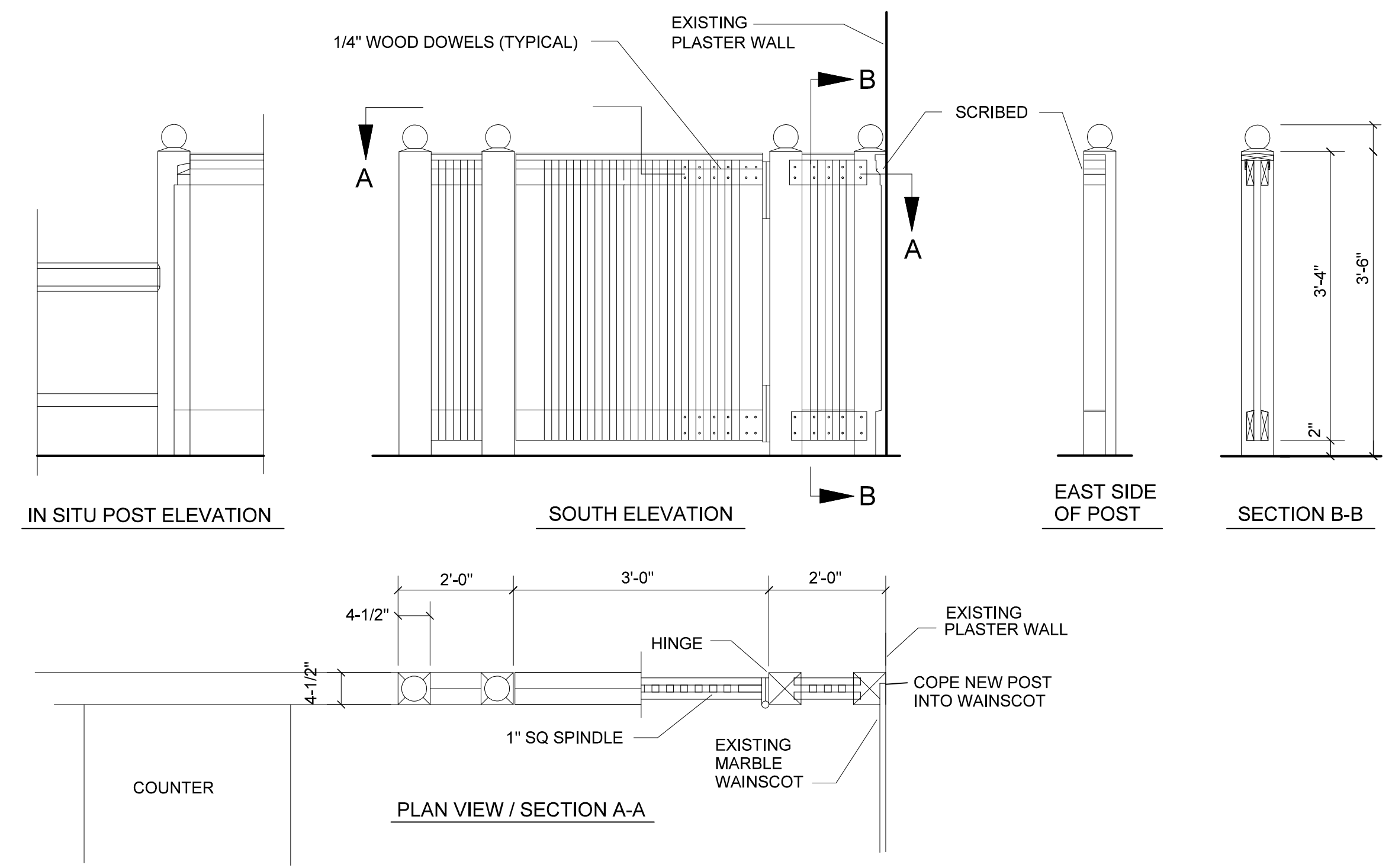
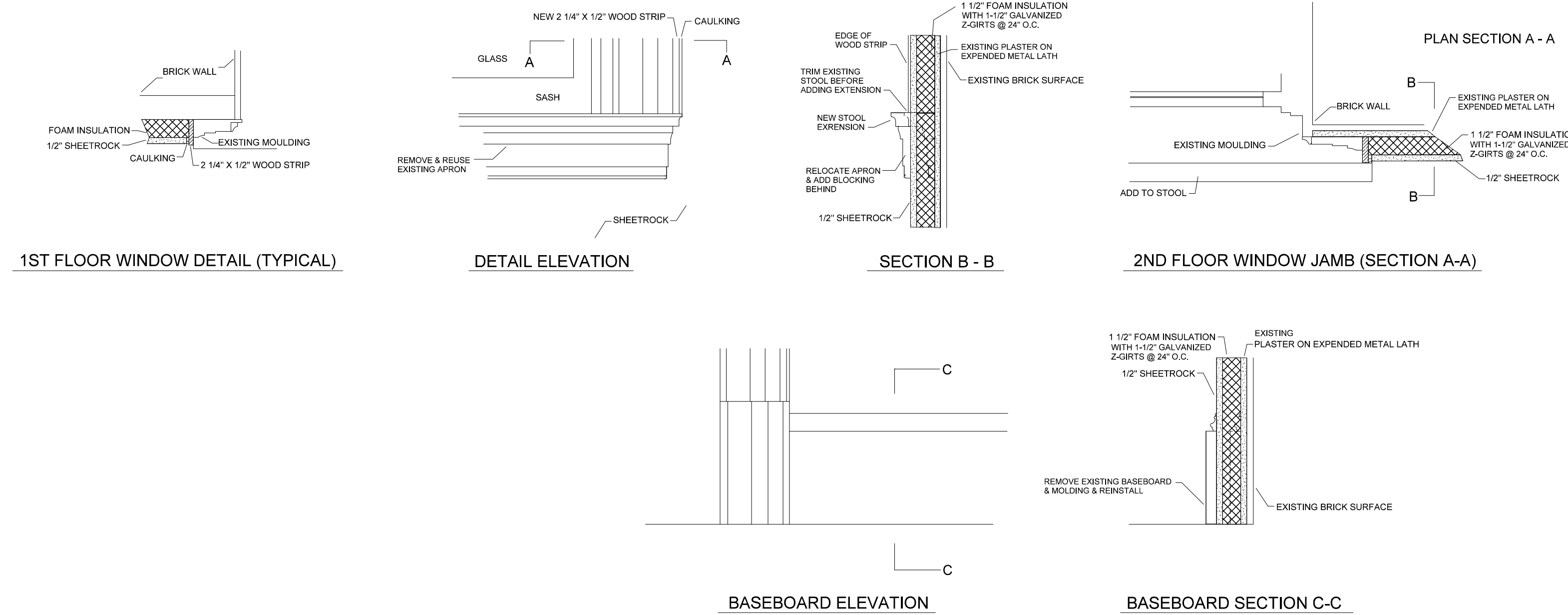


1 A5 NEW STEEL BEAMS & NEW FAUX-BEAM BOXING



1-1/2" 2 A5 GATE DETAIL @ FIRST FLOOR

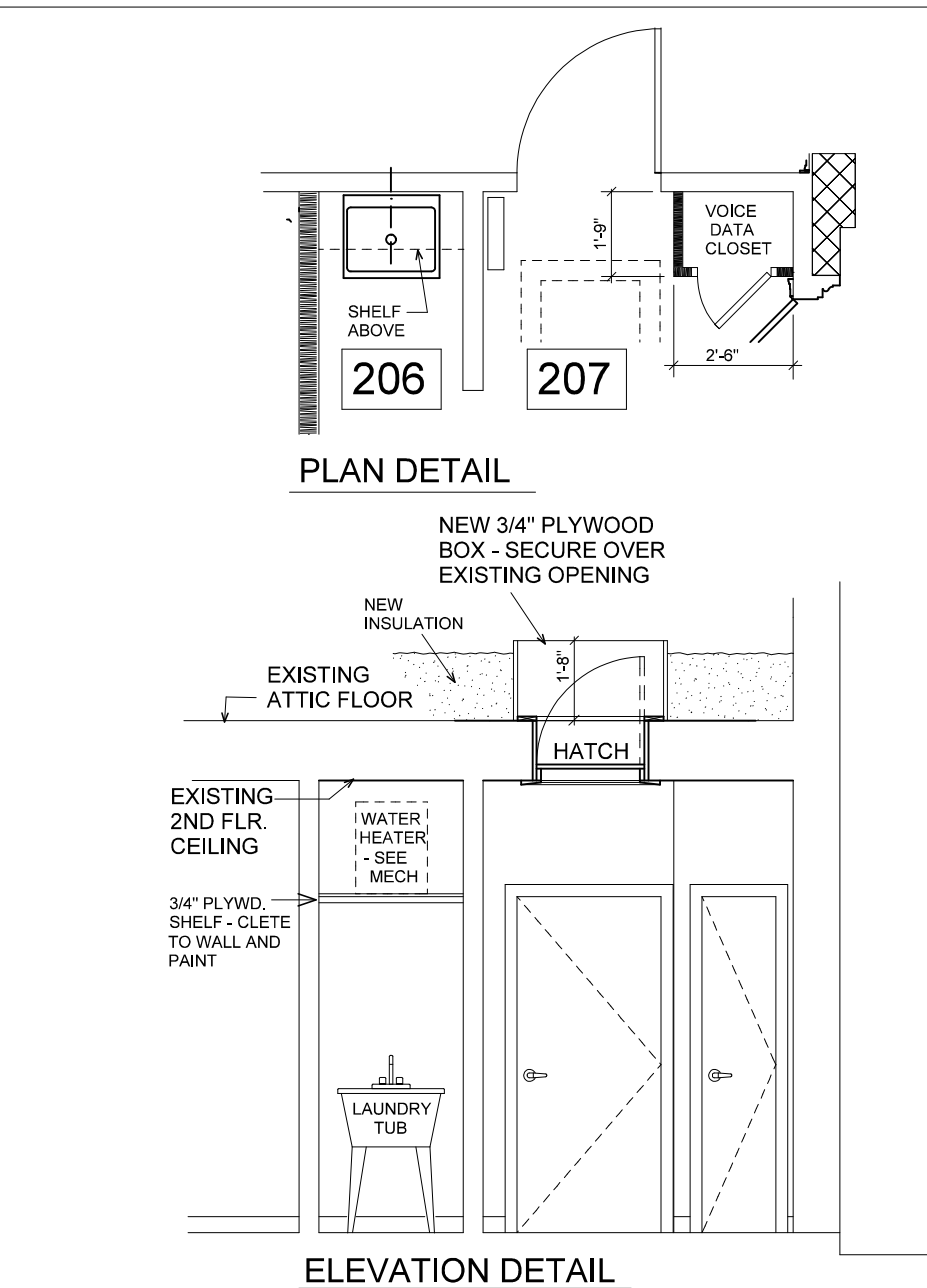


3 A5 1ST & 2ND FLR. PERIMETER WALL & WINDOW DETAILS

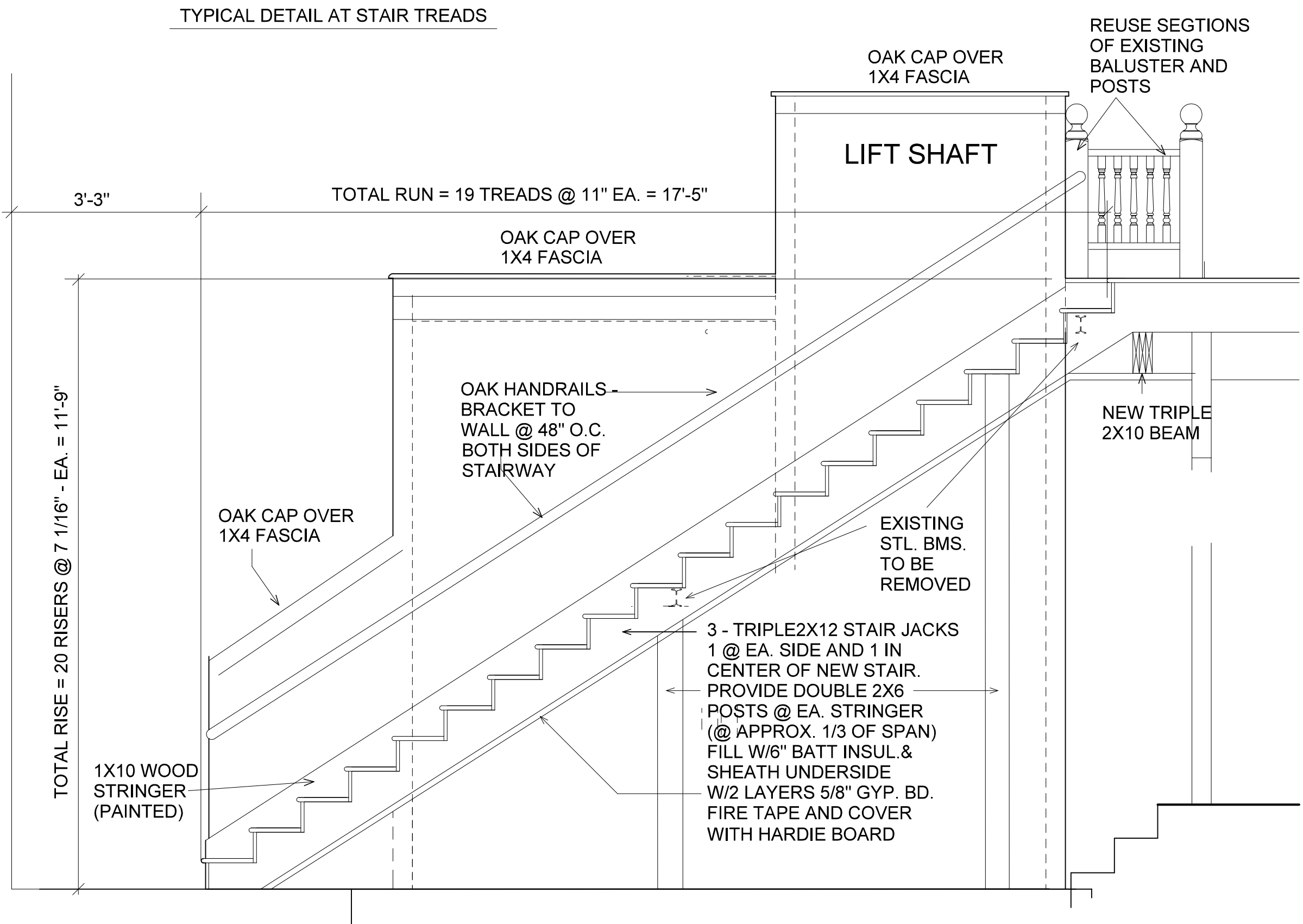
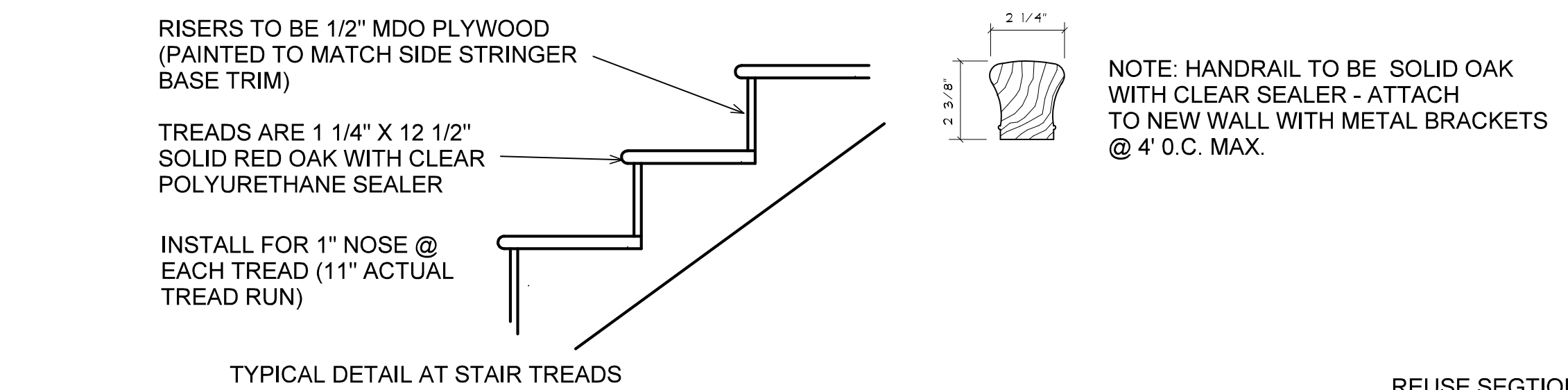
SPECIFICATIONS ARE NOTED ON RELEVANT DRAWING SHEETS FOR VARIOUS MATERIALS AND PRODUCTS. A SEPARATELY ISSUED SET OF FRONT END SPECIFICATIONS AND INSTRUCTIONS TO BIDDERS, AND MECHANICAL SPECIFICATIONS IS A COMPLIMENTARY PART OF THE TOTAL PACKAGE OF BID DOCUMENTS. SUPPLEMENTAL SPECIFICATIONS ARE NOTED AS FOLLOWS:

1. THE CONTRACTOR SHALL PROVIDE SHOP DRAWINGS, GENERAL SUBMITTALS AND MATERIAL SAMPLES FOR THE FOLLOWING WORK CATEGORIES: DOORS & FRAMES, HARDWARE, MAIN FLOOR RECEPTION GATE, ALL CASEWORK, LIGHTING & CEILING FANS, TOILET / PLUMBING FIXTURES & ACCESSORIES, PAINTS/STAIN FINISHES, FLOORING, WALL BASE, STORM WINDOWS & ASSOCIATED HARDWARE, CEILING TILE & GRID.
2. MASONRY. PROVIDE FIELD SAMPLES IN THE FORM OF TEST PATCHES, SHOWING EXAMPLE OF TUCKPOINTING WORK FOR APPROVAL PRIOR TO PERFORMING BALANCE OF WORK  
MORTAR MATERIALS: NON-STAINING WHITE PORTLAND CEMENT, TYPE 1 (ASTM C-150), MAX. 0.60% ALKALI TO PREVENT EFFLORESCENCE, (ORDINARY GRAY PORTLAND CEMENT WILL NOT BE ACCEPTED FOR MASONRY REPAIR)  
LIME: TYPE S, HIGH-CALCIUM HYDRATED LIME (ASTM C-207). SAND: CLEAN, WELL-GRADED OF MEDIUM-TO-FINE PARTICLES.  
MORTAR MIX: 1:3:12 MIXTURE OF CEMENT, LIME AND SAND RESPECTIVELY.  
REPOINTING JOINTS: USE OF POWER SAW AND CHISELING TOOLS TO REMOVE OLD MORTAR IS NOT ALLOWED. REMOVE ALL LOOSE, CRACKED OR OTHERWISE DETERIORATED MORTAR PRIOR TO REPOINTING. CLEAN ALL JOINTS TO MIN. 1/2" DEPTH. WHERE MORTAR IS REMOVED TO GREATER THAN 1/2" DEPTH, TWO STAGES ARE REQUIRED TO PREPARE JOINTS. FINAL REPOINTING OF THE OUTERMOST HALF INCH IN TWO STAGE REPOINTING SHALL NOT BE DONE UNTIL THE FIRST STAGE OF REPOINTING HAS BEEN INSPECTED AND APPROVED BY THE ARCHITECT. COMPACT MORTAR AGAINST SIDES OF JOINT TO OBTAIN FULL BOND BETWEEN MORTAR AND BRICK. TOOL FINAL REPOINTING TO MATCH EXISTING ORIGINAL TOOLING, AS APPROVED IN TEST PATCHES. NO EXCESS SLOPPED-OVER MORTAR SHALL BE LEFT ON FACE OF EXPOSED BRICK.  
NOTE: REPOINTING NOT PERMITTED WHEN THE TEMPERATURE IS BELOW 40 DEGREES F., EXCEPT UNDER CONDITIONS AND BY METHODS APPROVED BY THE ARCHITECT. ANY POINTING MORTAR WHICH HAS BEEN SUBJECTED TO FROST BEFORE IT IS PROPERLY CURED SHALL BE CLEANED OUT AND REDONE UNDER FAVORABLE CONDITIONS.  
AT THE OPTION OF THE ARCHITECT, TO CONTROL OVER-RAPID DRYING AND SHRINKING OF MORTAR IN HOT, DRY WEATHER, THE CONTRACTOR MAY BE REQUESTED TO PRE-WET JOINTS PRIOR TO REPOINTING OR TO PROTECT OR DAMPEN REPOINTED JOINTS TO ALLOW FAVORABLE CURING.

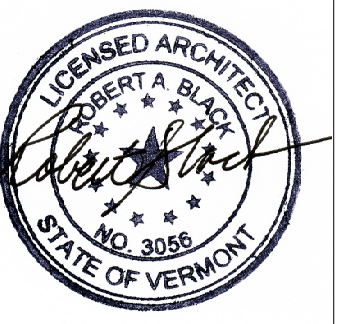
4 A5 SUPPLEMENTAL SPECIFICATIONS



5 A5 NEW REPLACEMENT STAIR DETAILS



6 A5 NEW REPLACEMENT STAIR DETAILS



Date	Issue	Permit Bid	No.
4-30-15			
8-28-15			

Architect Team:  
Max Ferro/Blaine Cliver/Robert Black  
Brandon, VT 05733  
(802) 247-0180 bcliver59@gmail.com  
robert@robertblack.biz

Town of Brandon  
2417 Franklin Street  
Brandon, VT 05733  
David Atherton, Town Manager  
(802) 247-3635

CONSTRUCTION DETAILS & SPECIFICATIONS

TOWN OFFICES REHABILITATION  
49 CENTER STREET  
BRANDON, VT. 05733

A5

1/2"