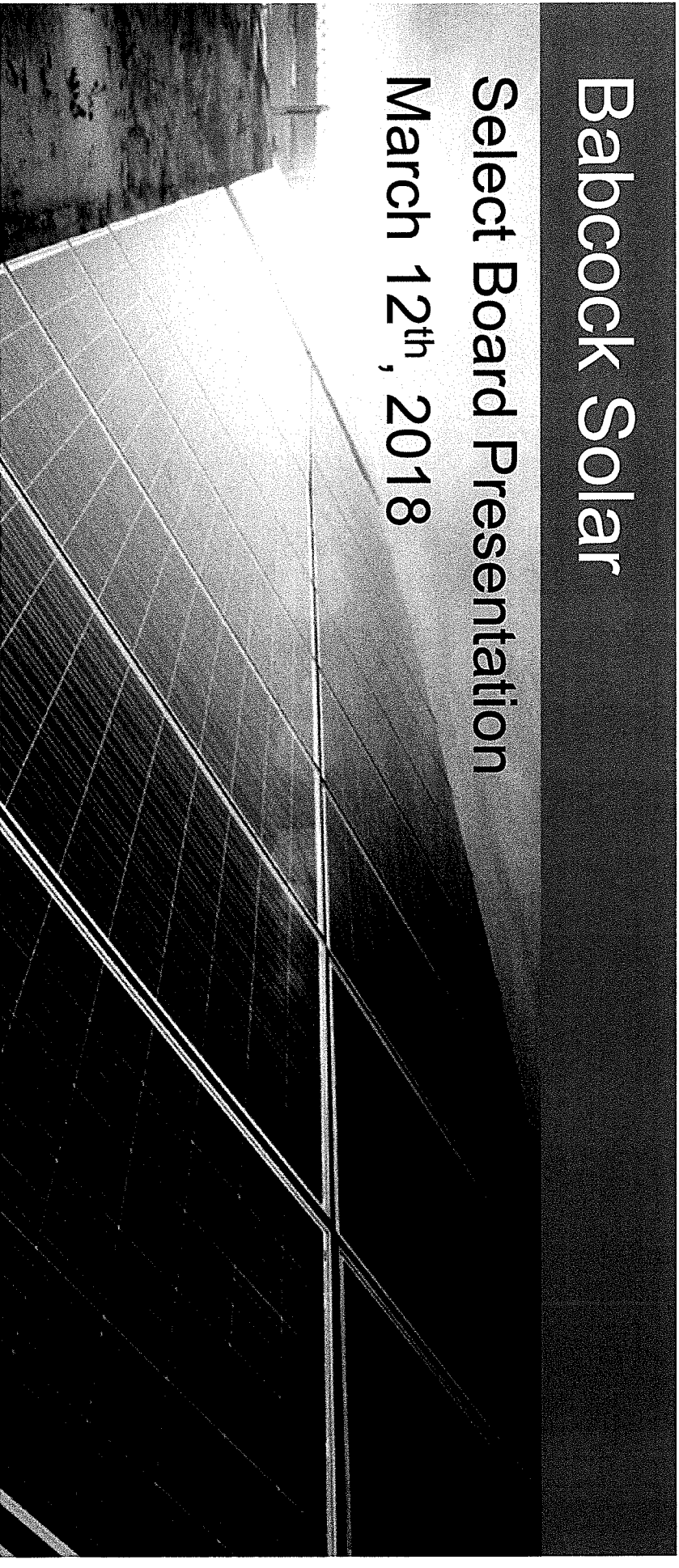


Babcock Solar

Select Board Presentation

March 12th, 2018



Conti Solar

Conti Solar Introduction

→ **Proven Track Record** - Leading solar developer since 2007

- Over 100 projects installed, primarily in the northeastern US region
- 100 solar professionals across 10 states

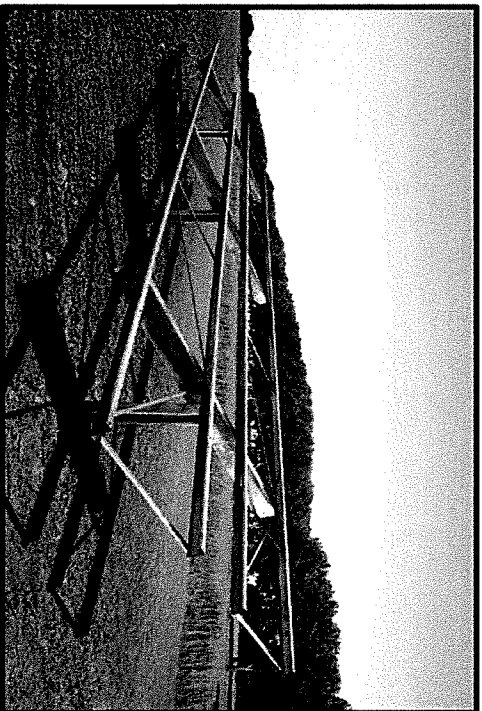
→ **Strong Corporate Values** – subsidiary of the Conti Group

- 110-year old family owned company
- Shared values of honesty, integrity, entrepreneurship, and environmental stewardship

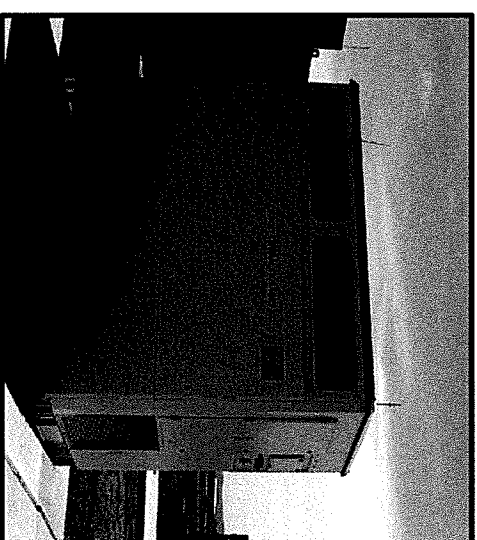
→ **Our Work in Vermont**

- Elizabeth Mines Project
- Contributing to Vermont's "Renewable Energy Standard"
- Vermont's RES encourages "Distributed Generation" through the Standard Offer Program

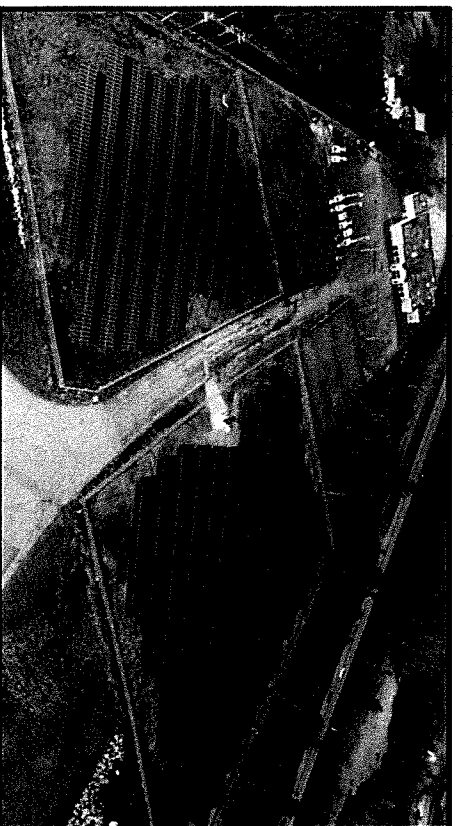
Typical PV Equipment



Solar Racking on driven posts



Pad-mounted Inverter (DC to AC)



Buxton Street Solar Project in Uxbridge, MA



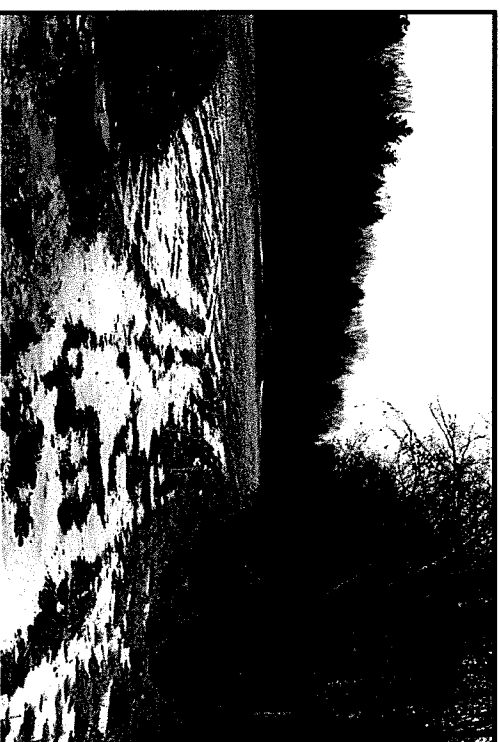
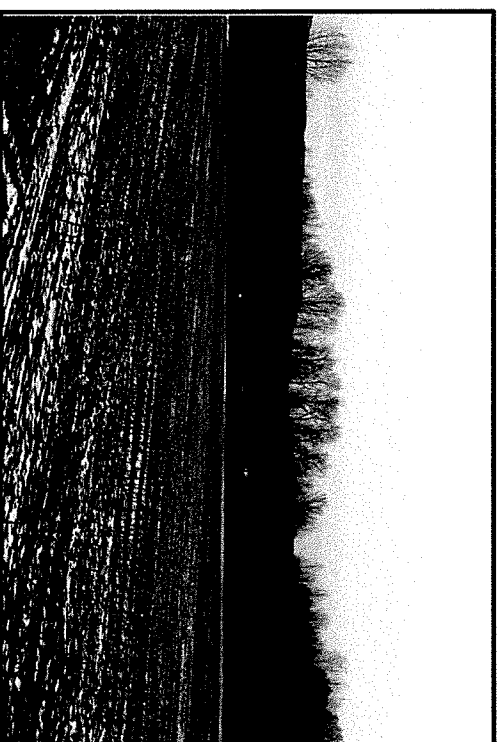
Conti's Elizabeth Mine project in Stafford, VT

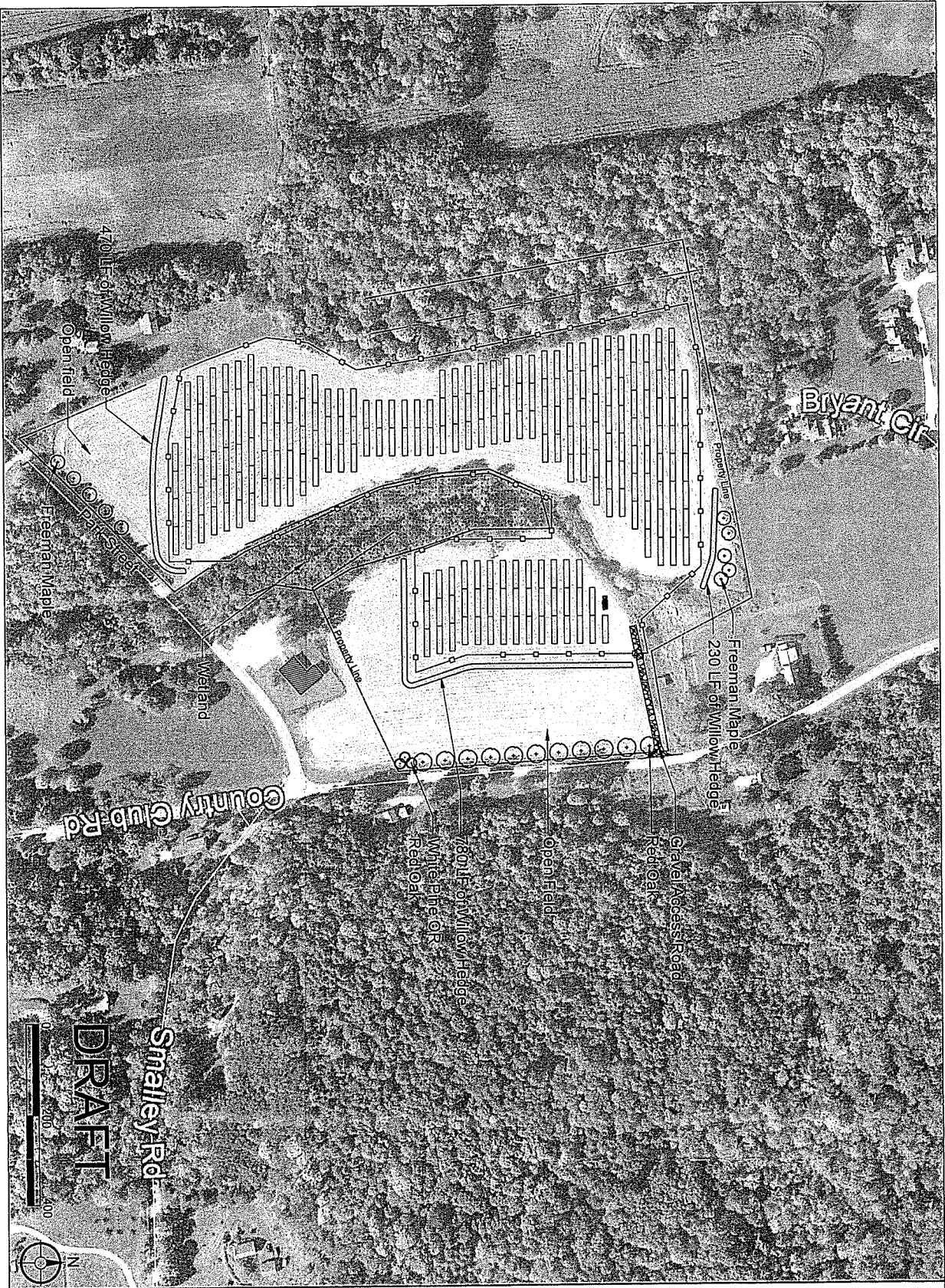
Babcock Solar – Location



Conti Solar

Site Existing Conditions



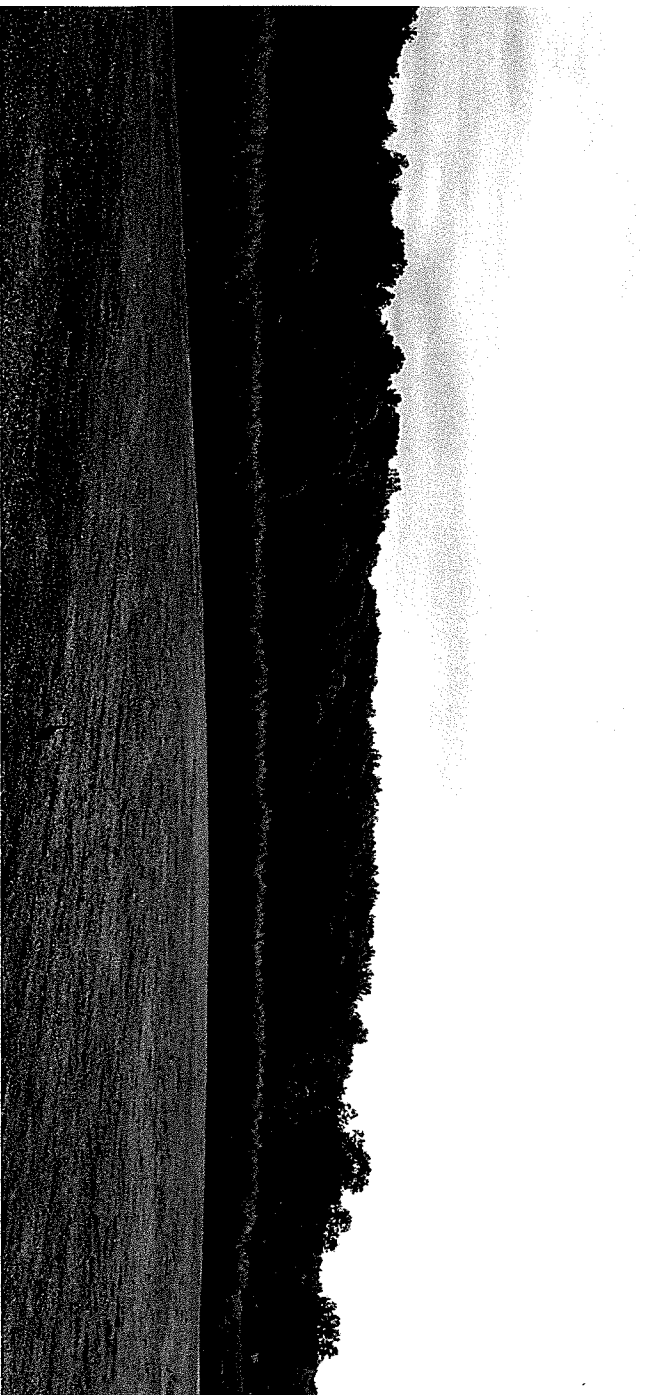
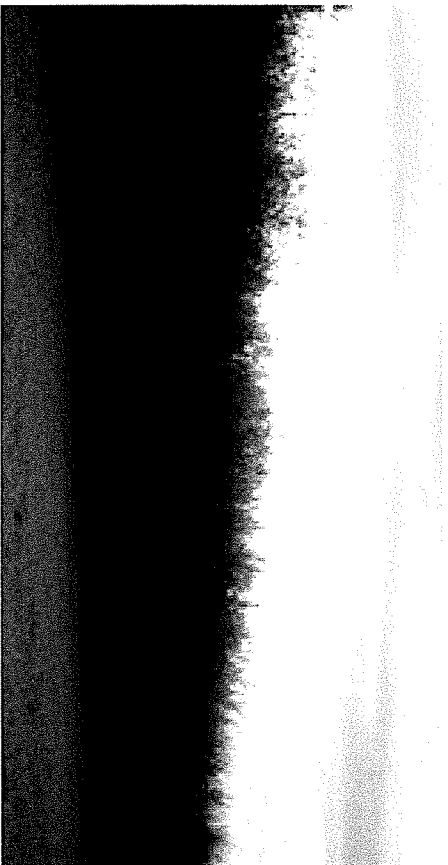


LandWorks
Landscape Architecture
Planning
Graphic Design
228 Maple Street
Middlebury, VT 05753
802.388.3011
www.landworksvt.com

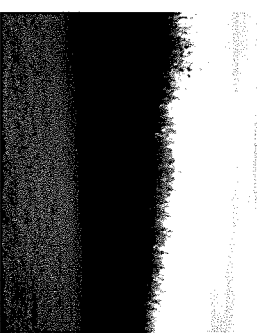
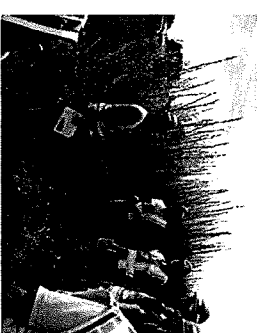
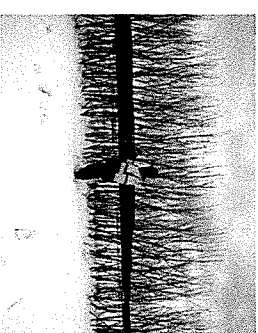
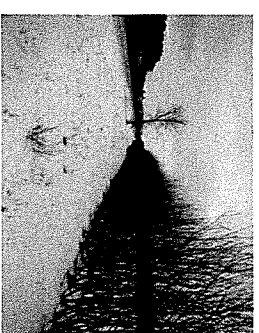
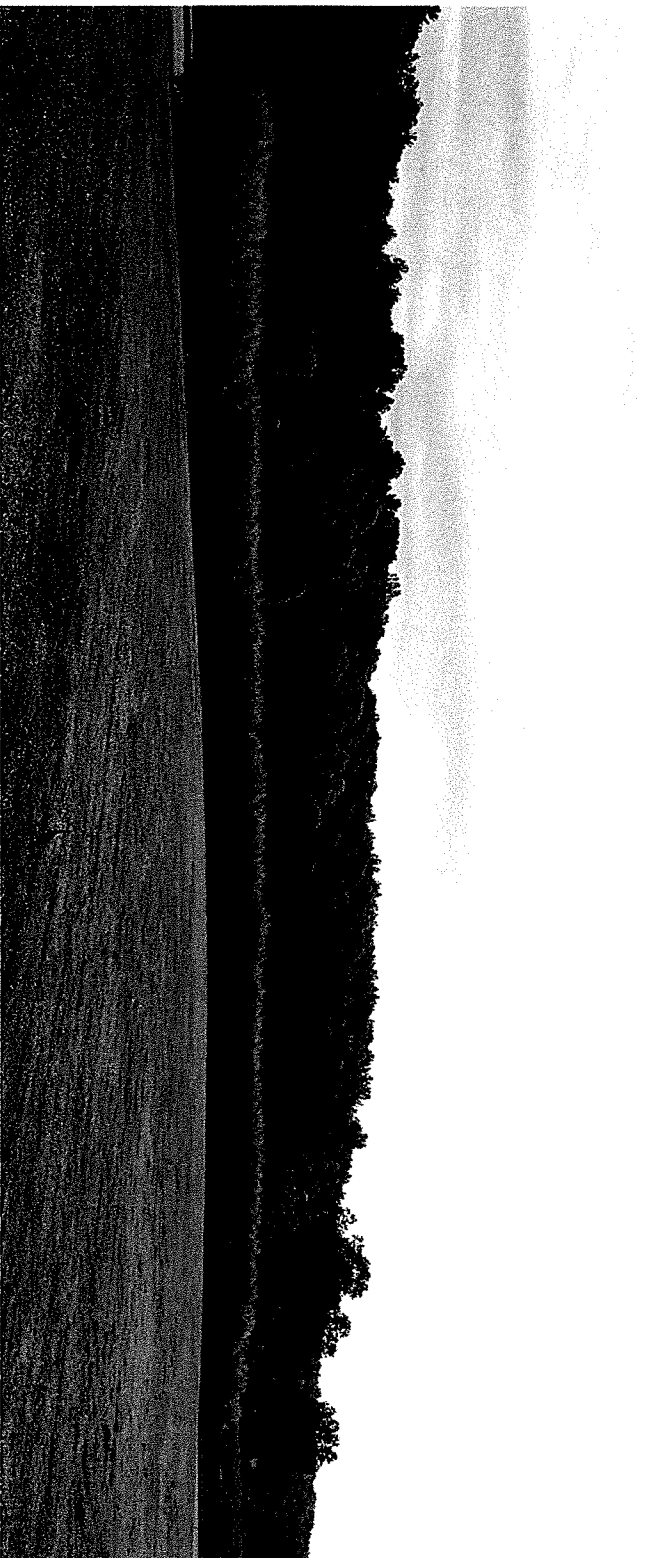
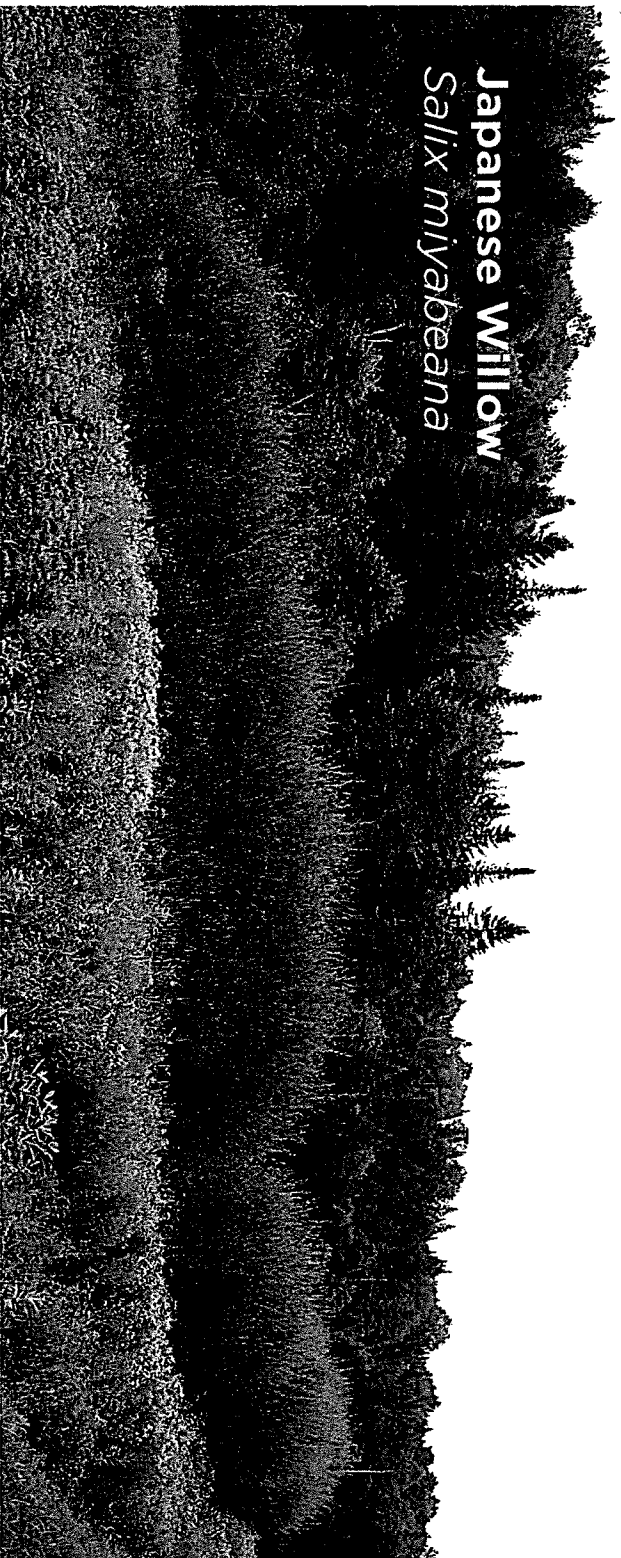
Babcock Site
Brandon
381 Country Club Road
Brandon, VT

DRAWN BY:	LT
CHECKED BY:	DR / NS
DATE:	March 08, 2018
PROJECT NUMBER:	
REVISIONS:	
SCALE:	1" = 200'-0"
Draft For Review	
DRAWING NAME:	Landscape Plan
DRAWING NUMBER:	

Proposed Plants



Japanese Willow
Salix miyabeana



Japanese Willow

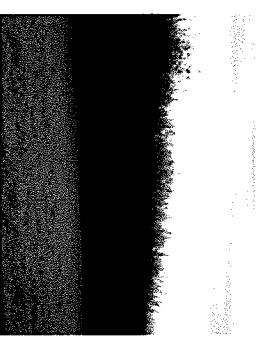
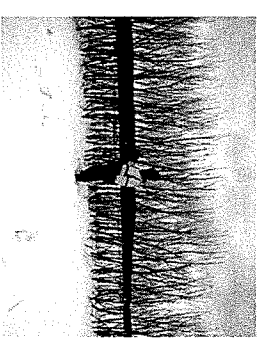
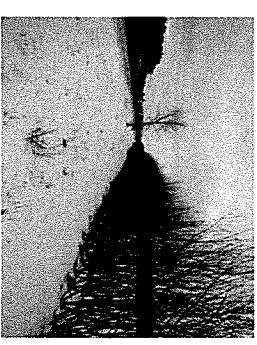
Salix miyabeana



Mature Height: 12-15'

Mature Spread: 10-15'

Characteristics: Very fast growing, reaches mature in 2-4 years with coppicing
Little to no maintenance after establishment
Vigorous growth habit
Creates a continuous hedgerow
Coppicing (cutting back) encourages denser branching habits



Autumn Blaze Freeman Maple

Acer x freemanii 'Autumn Blaze'



Mature Height: 40-60'

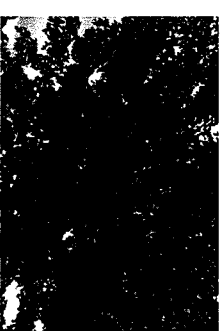
Mature Spread: 30-40'

Characteristics: Native

Great fall color

Excellent street tree

Rounded pyramidal growth habit



Red Oak

Quercus rubra



Mature Height: 50-75'

Mature Spread: 50-75'

Characteristics: Native

Salt and drought tolerant

Great street tree

Provides food and habitat (acorns)

Eastern White Pine

Pinus strobus



Mature Height: 50-80'

Mature Spread: 20-40'

Characteristics: Native

Fast growing

Evergreen



Babcock Solar - Overview

- 2.2MWac solar PV array we would like to bring to Brandon
- Babcock Solar will power 500 homes, or ~25% of Brandon
- Awarded a Standard Offer contract under Vermont's RES
- Economic Benefits:
 - 40-50 local jobs during construction
 - \$8,800 in annual school taxes, and \$160,000 in municipal taxes over 25-year project life

Babcock Solar – Overview (cont.)

- Completed environmental and archaeological due diligence
- Aesthetics study has been initiated
- Favorable Feasibility Study received from GMP



Project Update

- 45 Day Notice issued in February
- Next Steps:
 - Continue Public Outreach, incorporate town input
 - Complete Environmental Studies / Finalize Site Plan
 - File completed application with PUC

Conti[®] Solar

Thank You

