



CONANT SQUARE

30 CONANT SQUARE
BRANDON, VERMONT



- FRONT OF THE BUILDING WAS BUILT IN THE 1820'S
- IT WAS USED AS A TAVERN AND WAS A STOP ON THE UNDERGROUND RAILROAD
- UNDERGROUND TUNNEL TO MARBLE STREET AND TO A BIG HOUSE ON PEARL
- ANOTHER ADDITION WAS MADE IN THE 1850'S





- AROUND 1982 – PURCHASED BY FRANK GIROUX, ARCHITECT (along with a few partners)
- PUT ON A 3 STORY ADDITION AND PUT IT INTO A HUD NC-SR PROJECT (Section 8 of the day)
- IT HAS BEEN A SUBSIDIZED PROPERTY EVER SINCE
- VHFA WAS THE ORIGINAL FINANCIER AND INLCUDED A COVENANT TO PRESERVE THE AFFORDABILITY AND RESTRICTED ITS RESALE

ARNOLD & SCANGAS
ARCHITECTS



North Elevation, Conant Square



West Elevation, Conant Square



- IN THE EARLY 2000'S MANY PRIVATE DEVELOPERS WANTED TO GET OUT OF THE SECTION 8 CONTRACTS – WHICH WERE EXPIRING

• THIS MADE VHFA WORRIED

IN 2004 VHFA CONTACTED THE RUTLAND COUNTY COMMUNITY LAND TRUST TO PURCHASE THE PROPERTY AND BE STEWARDS OF THE SUBSIDIES AWARDED THE PROPERTY

IN 2006 RCCLT PURCHASED THE PROPERTY FROM FRANK GIROUX.



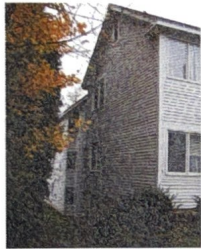
- LIGHT REHAB WAS DONE IN 2007
- LAZ SCANGUS WAS THE ARCHITECT
- GIANCOLA CONSTRUCTION WAS THE CREW ON THE JOB

- NEW HEATING
- NEW ELECTRIC
- REHABBED ELEVATOR
- FIRE ALARM SYSTEM
- NEW WINDOWS, DOORS
- NEW KITCHENS/BATHS
- NEW SPRINKLER SYSTEM
- NEW MECHANICAL VENTILATION



HOUSING TRUST of Rutland County

ARNOLD & SCANGAS
ARCHITECTS



South Elevation at Addition, Conant Square



East Elevation at Addition, Conant Square

29 Ethan Allen Avenue, Suite 5

Colchester, Vermont

05446-3332

ARNOLD & SCANGAS
ARCHITECTS



East Elevation, Conant Square



East Elevation at Addition, Conant Square

29 Ethan Allen Avenue, Suite 5

Colchester, Vermont

05446-3332